

Figure S1. Giemsa-stained image of the lagging chromosome in NCI-N87 cells. Chromosomes remained on the metaphase plate and formed bridges in anaphase (red arrows).

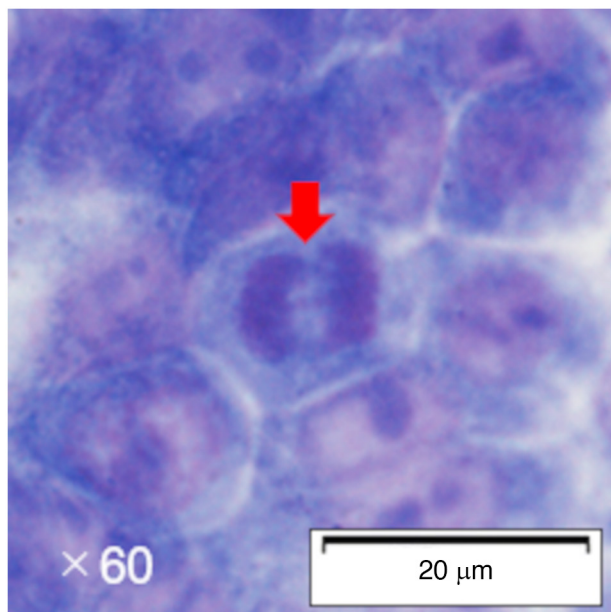


Figure S2. Cell proliferation following *KNTC1* knockdown. (A) No decrease in cell proliferation was observed in the MKN74, KATOIII and TIG-1-20 cells following *KNTC1* knockdown, whereas a decrease in cell proliferation was observed in the NCI-N87 cells. All data were analyzed using the Student's t-test. * $P < 0.05$ vs. siControl. (B) No increase in apoptosis was observed following *KNTC1* knockdown in all four cell lines. DAPI staining; 60X objective. *KNTC1*, kinetochore-associated 1 gene.

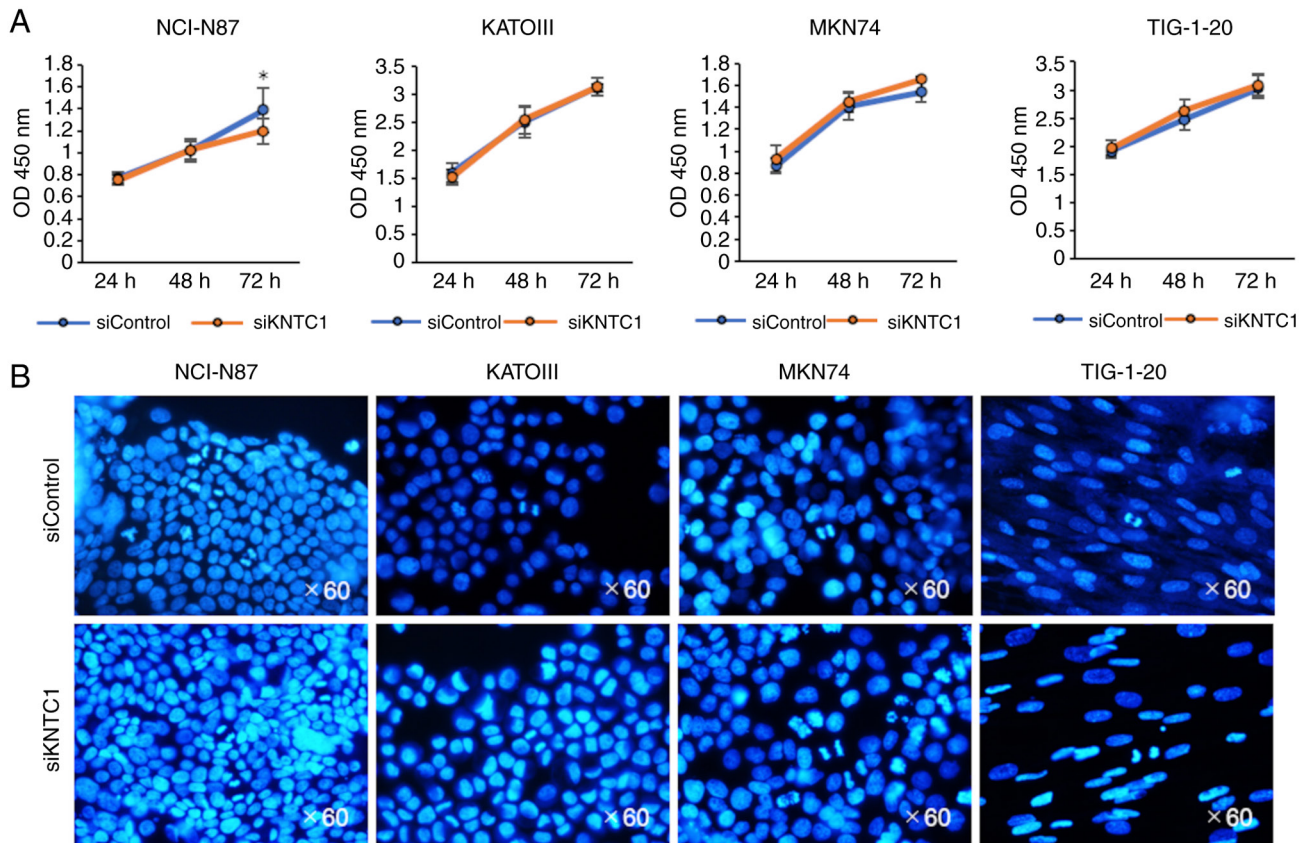


Figure S3. Kaplan-Meier plot showing *KNTC1* mRNA expression levels and outcomes of prognoses in patients with gastric cancer. In gastric cancer, a low *KNTC1* expression was found to be associated with a poor prognosis. $P=0.047$, low expression vs. high expression. Kaplan-Meier plots were obtained from The Human Protein Atlas version 23.0 (https://www.proteinatlas.org/ENSG00000184445-KNTC1/cancer/stomach+cancer#STAD_TCGA). *KNTC1*, kinetochore-associated 1 gene.

