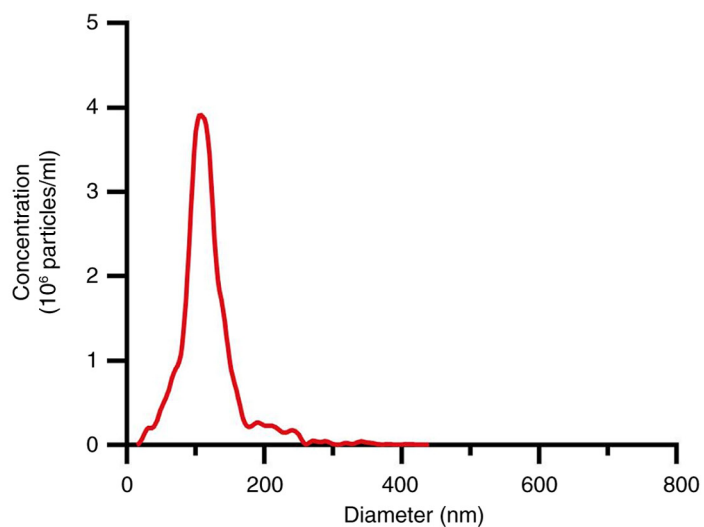


Figure S1. Detection of CA-MSC exosomes. (A) The size distribution of the CA-MSC exosomes. (B) Detection of the exosome markers in CA-MSCs and their exosomes. Since this experiment was intended to determine the existence of exosome markers but not for statistical analysis, only one experiment was performed. CA-MSCs, cancer-associated mesenchymal stem cells; TSG101, tumor susceptibility gene 101; CD, cluster of differentiation.

A



B

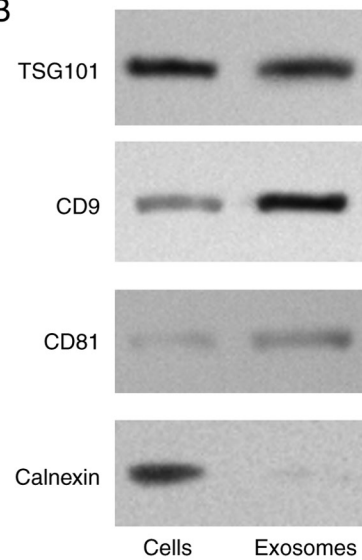
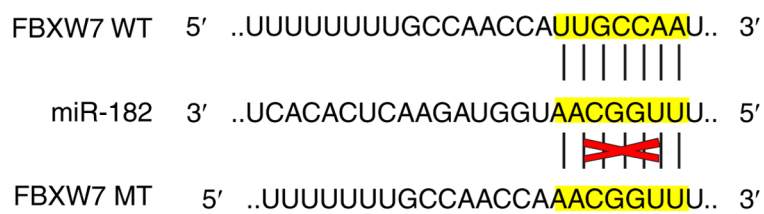


Figure S2. Dual-Luciferase Reporter Gene assay. (A) Identified bindings site between miR-182 and FBXW7. (B) Relative luciferase activity between the NC mimics and miR-182 mimics groups. \*\*\*P<0.001; ns, no significance. miR-182, microRNA-182; FBXW7, F-box and WD repeat domain containing 7; WT, wild-type; MT, mutated.

A



B

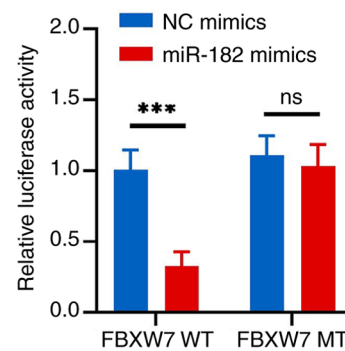


Figure S3. Transfection efficiency of miR-182 mimics and FBXW7 overexpression vector. Comparison of miR-182 expression in (A) A549 and (B) H1299 cells in the NC-mimic, miR-mimic, control vector and OE-FBXW7 groups. Comparison of FBXW7 expression in (C) A549 and (D) H1299 cells in the NC-mimic, miR-mimic, control vector and OE-FBXW7 groups. \* $P < 0.05$ , \*\* $P < 0.01$  and \*\*\* $P < 0.001$ ; ns, no significance. miR-182, microRNA-182; FBXW7, F-box and WD repeat domain containing 7; OE, overexpression (vector); NC, negative control.

