

Figure S1. Images of cell distribution in the bottom chambers (scale bar, 200 μm). (A) Cell migration images for the sh-NC and shDBN1-1/2 groups. (B) Cell invasion images of the sh-NC and shDBN1-1/2 groups. DBN1, drebrin 1; NC, negative control; sh, short hairpin RNA.

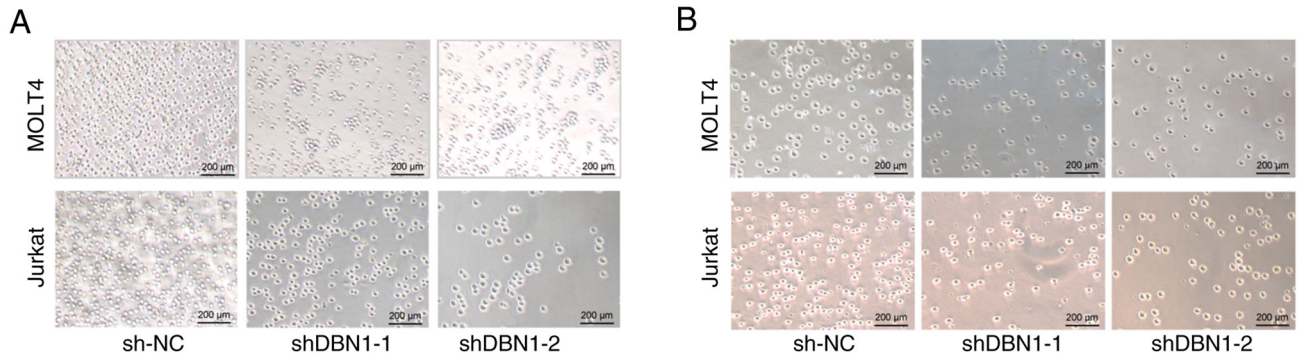


Figure S2. Western blot analysis of GAB2 protein expression in GAB2-overexpression MOLT4 cells. Statistical significance was determined using an unpaired t-test. ***P<0.001. GAB2, Grb2-associated binding protein 2; NC, negative control; ox-, overexpression.

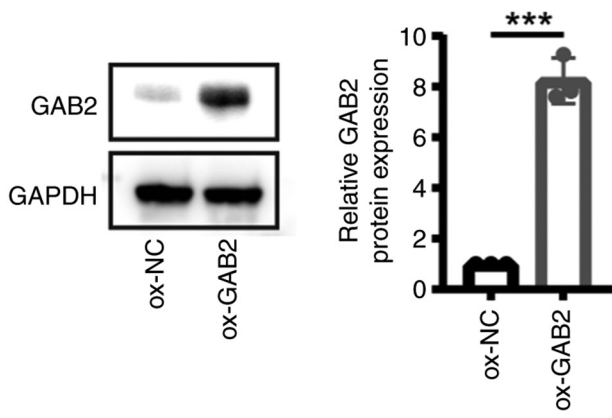


Figure S3. Reverse transcription-quantitative PCR analysis of miR-218-5p expression in MOLT4 and Jurkat cells transfected with miR-218-5p mimics or mimic-NC. Statistical significance was determined using an unpaired t-test. * $P < 0.05$, ** $P < 0.01$. miR, microRNA; NC, negative control.

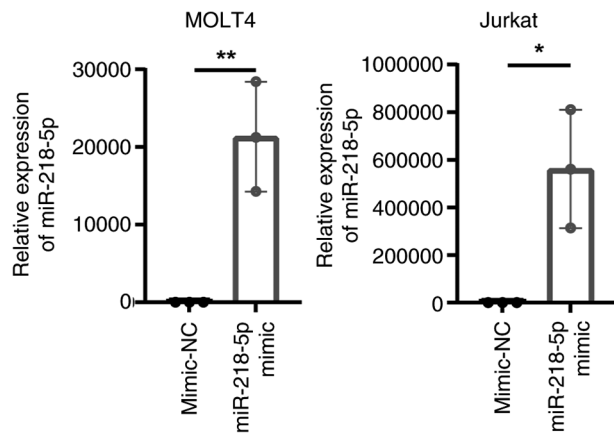


Figure S4. Images of cell distribution in the bottom chambers (scale bar, 200 μm). (A) Cell migration images for the miR-218-5p mimic and mimic-NC groups. (B) Cell invasion images for the miR-218-5p mimic and mimic-NC groups. miR, microRNA; NC, negative control.

