

Figure S1. Computed tomography scan showing a few prominent subpectoral and mediastinal lymph nodes. Arrow indicates enlarged mediastinal node.



Figure S2. Immunohistochemical analysis of S100 revealing absent staining (magnification, x200).

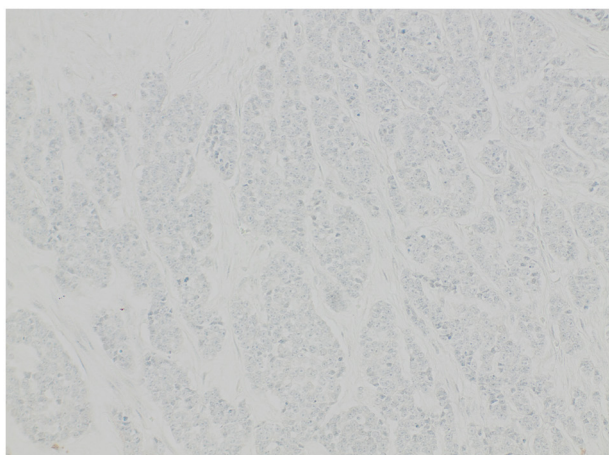


Figure S3. Tumor protein p63 immunostaining demonstrating a lack of expression (magnification, x200).



Figure S4. Chromogranin immunohistochemistry showing a lack of staining (magnification, x200).

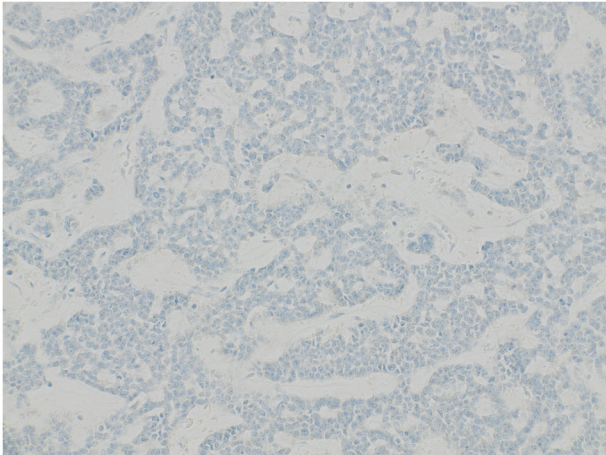


Figure S5. Synaptophysin immunohistochemical staining indicating no reactivity (magnification, x200).

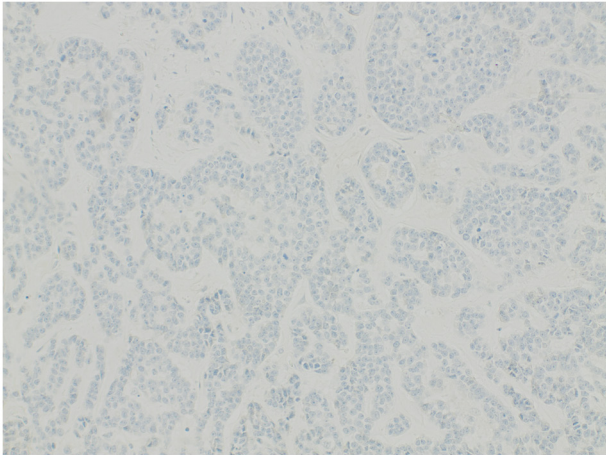


Figure S6. Estrogen receptor immunohistochemistry revealing no detectable staining (magnification, x200).

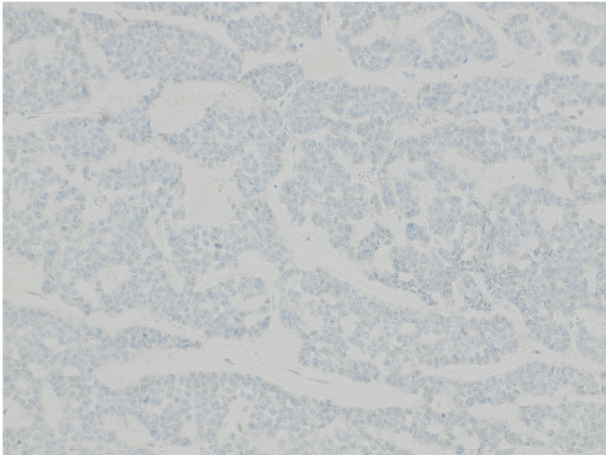


Figure S7. Human epidermal growth factor receptor 2 immunohistochemistry indicating an absence of expression (magnification, x200).

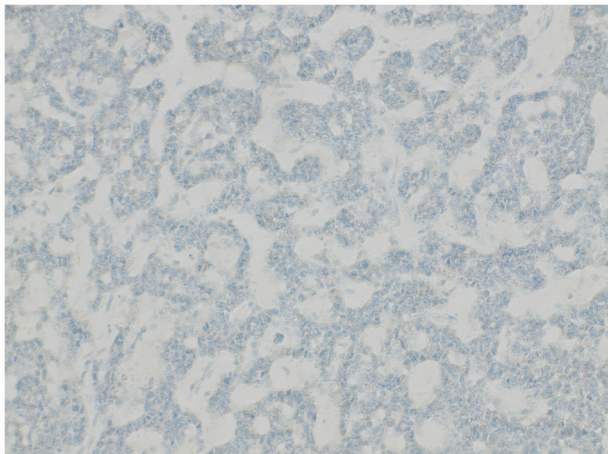


Figure S8. Computed tomography scan showed a new large lytic bone metastasis in the right iliac bone as indicated by the arrow.

