



Figure S2. Kaplan-Meier overall survival curves for high- and low-risk patient groups, stratified based on TNM classification within The Cancer Genome Atlas cohort.

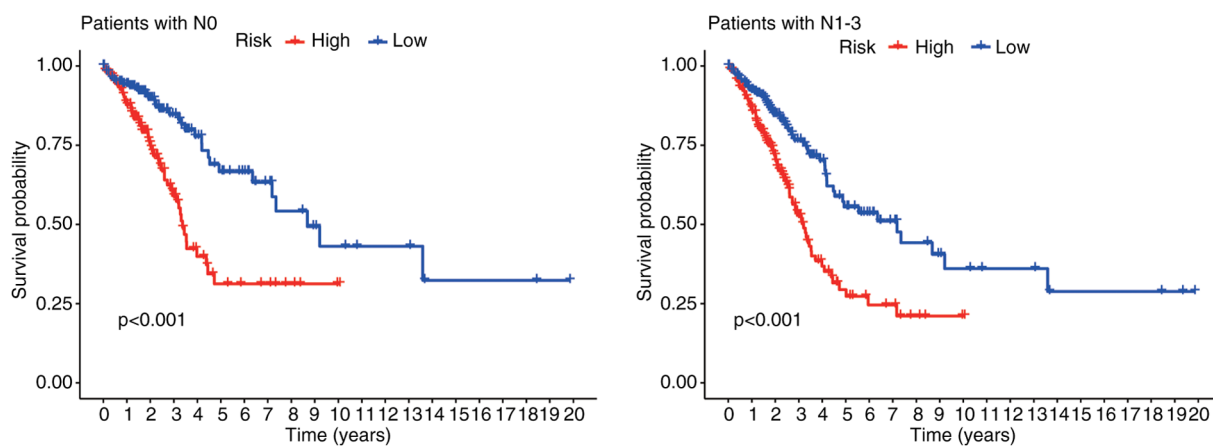




Figure S4. Validation of 4-cuproptosis-related long non-coding RNA expression in lung adenocarcinoma cell lines. Expression normalized to  $\beta$ -actin using the  $2^{-\Delta\Delta C_q}$  method. Data represent the mean  $\pm$  SEM (n=3 technical replicates; Student's t-test).

