

Figure S1. Multiple-locus variable-number tandem repeat analysis strain typing and cluster analysis. (A) Agarose gel electrophoresis of PCR products of 13 cases of MTB at the MIRU 26 site. (B) Cluster analysis tree diagram of MTB collected by the collaborative team. MTB, *Mycobacterium tuberculosis*; I, non-Beijing family MTB; II, Beijing family MTB.

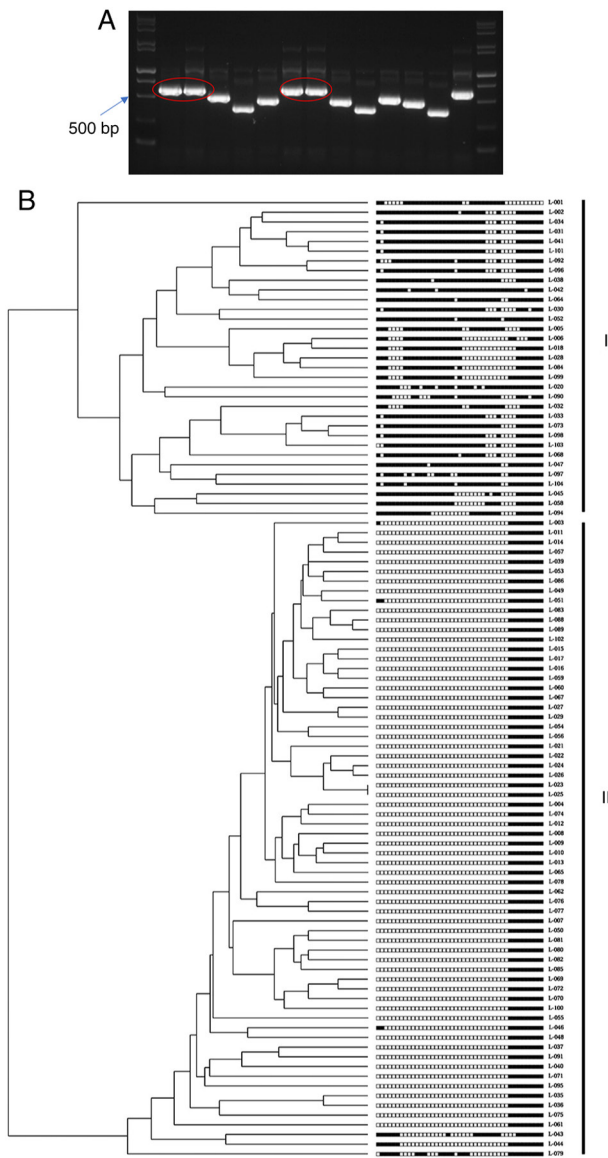


Figure S2. Expression of cleaved-PARP after infection with MTB. (A) Western blotting of cleaved-PARP after infection with MTB. (B) Semi-quantification of cleaved-PARP protein levels after infection with MTB. Data are presented as the mean  $\pm$  SEM. \* $P$ <0.05, \*\* $P$ <0.01. A.U., arbitrary units; C group, blank control group not infected with any bacteria; L group, MTB from Xinjiang clinical isolate-infected group; MTB, *Mycobacterium tuberculosis*; V group, H37Rv standard strain-infected group.

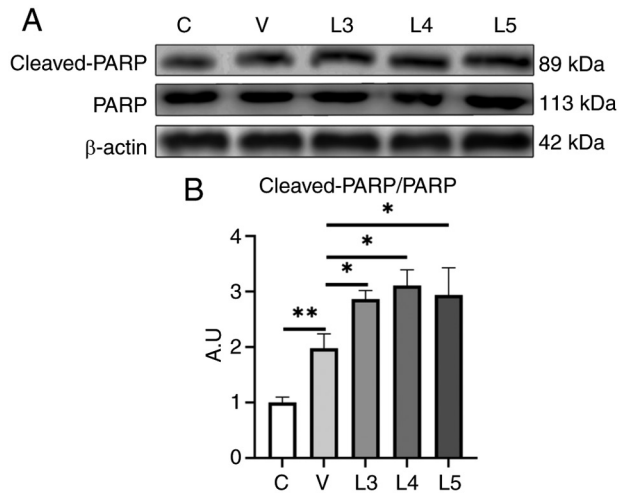


Figure S3. Expression of cleaved-PARP before and after CDK1 inhibition. (A) Western blotting of cleaved-PARP before and after CDK1 inhibition. (B) Semi-quantification of cleaved-PARP before and after CDK1 inhibition. Data are presented as the mean  $\pm$  SEM. \* $P < 0.05$ . A.U., arbitrary units; C group, blank control group not infected with any bacteria; CDK1, cyclin-dependent kinase 1; L group, *Mycobacterium tuberculosis* from Xinjiang clinical isolate-infected group; V group, H37Rv standard strain-infected group.

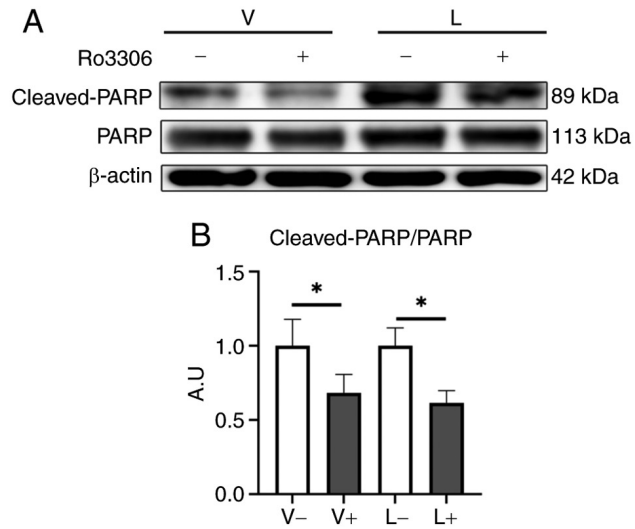


Figure S4. Expression of cleaved-PARP before and after inhibition of p53(Ser315) phosphorylation. (A) Western blotting of cleaved-PARP before and after inhibition of p53 (Ser315) phosphorylation. (B) Semi-quantification of cleaved-PARP before and after inhibition of p53 (Ser315) phosphorylation. Data are presented as the mean  $\pm$  SEM. \* $P < 0.05$ . A.U., arbitrary units; C group, blank control group not infected with any bacteria; L group, *Mycobacterium tuberculosis* from Xinjiang clinical isolate-infected group; Pft- $\alpha$ , pifithrin- $\alpha$ ; V group, H37Rv standard strain-infected group.

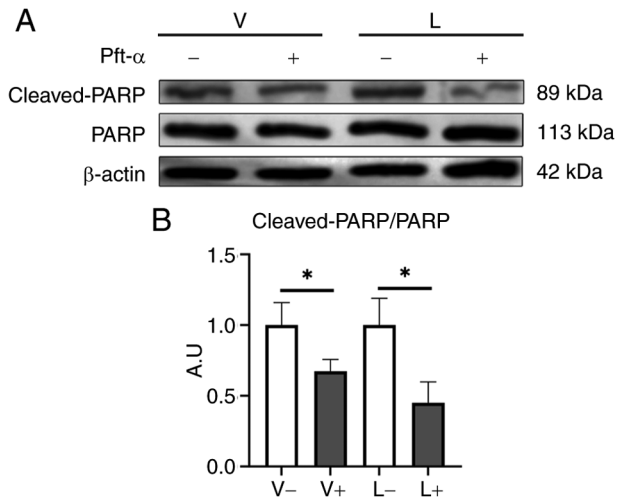


Figure S5. Expression of cleaved-PARP following treatment with TC11, Pft- $\alpha$  or cotreatment with TC11 and Pft- $\alpha$ . (A) Western blotting of cleaved-PARP following treatment with TC11, Pft- $\alpha$  or TC11 + Pft- $\alpha$ . (B) Semi-quantification of cleaved-PARP following treatment with TC11, Pft- $\alpha$  or TC11 + Pft- $\alpha$ . Data are presented as the mean  $\pm$  SEM. \*\*P<0.01, \*\*\*P<0.001. A.U., arbitrary units; Pft- $\alpha$ , pifithrin- $\alpha$ .

