

Figure S1. Inhibition or depletion of efferocytosis abolishes the protective phenotype conferred by HMP. (A) Assessment and quantification of efferocytosis. (B) Proportion of CD68-positive cells engulfing TUNEL-positive apoptotic cells relative to the total CD68-positive cell population. (C) Hematoxylin and eosin staining of rat liver tissue. (D) Suzuki score (n=6). ***P<0.001. HMP, hypothermic machine perfusion.

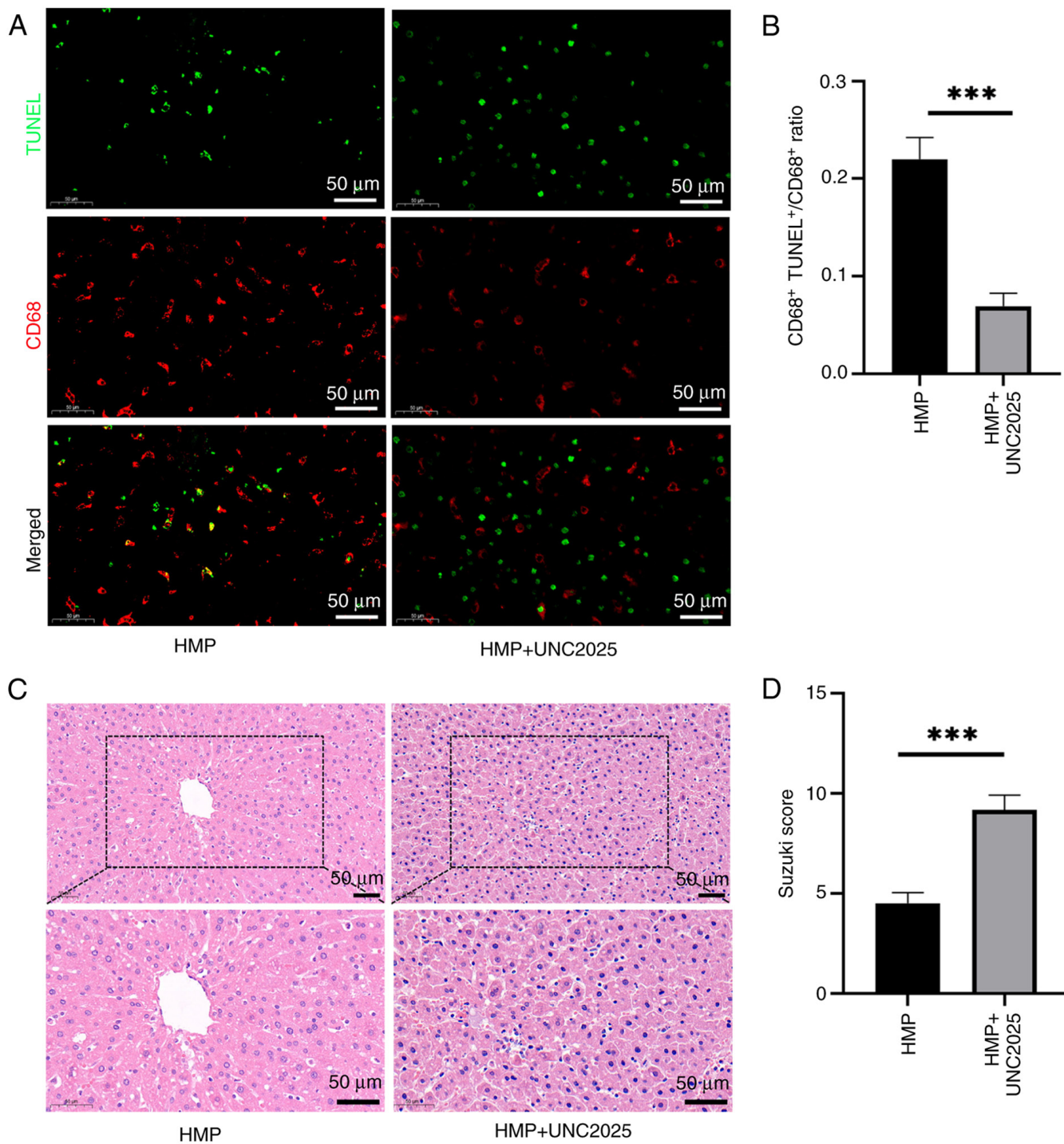


Figure S2. Gene Ontology enrichment analysis of the top 20 significantly enriched biological processes for differentially expressed genes. RNA sequencing analysis identified differentially expressed genes between the ov-KLF2 and ov-control groups (adjusted P-value <0.05). ov, overexpression; KLF2, Kruppel-like factor 2.

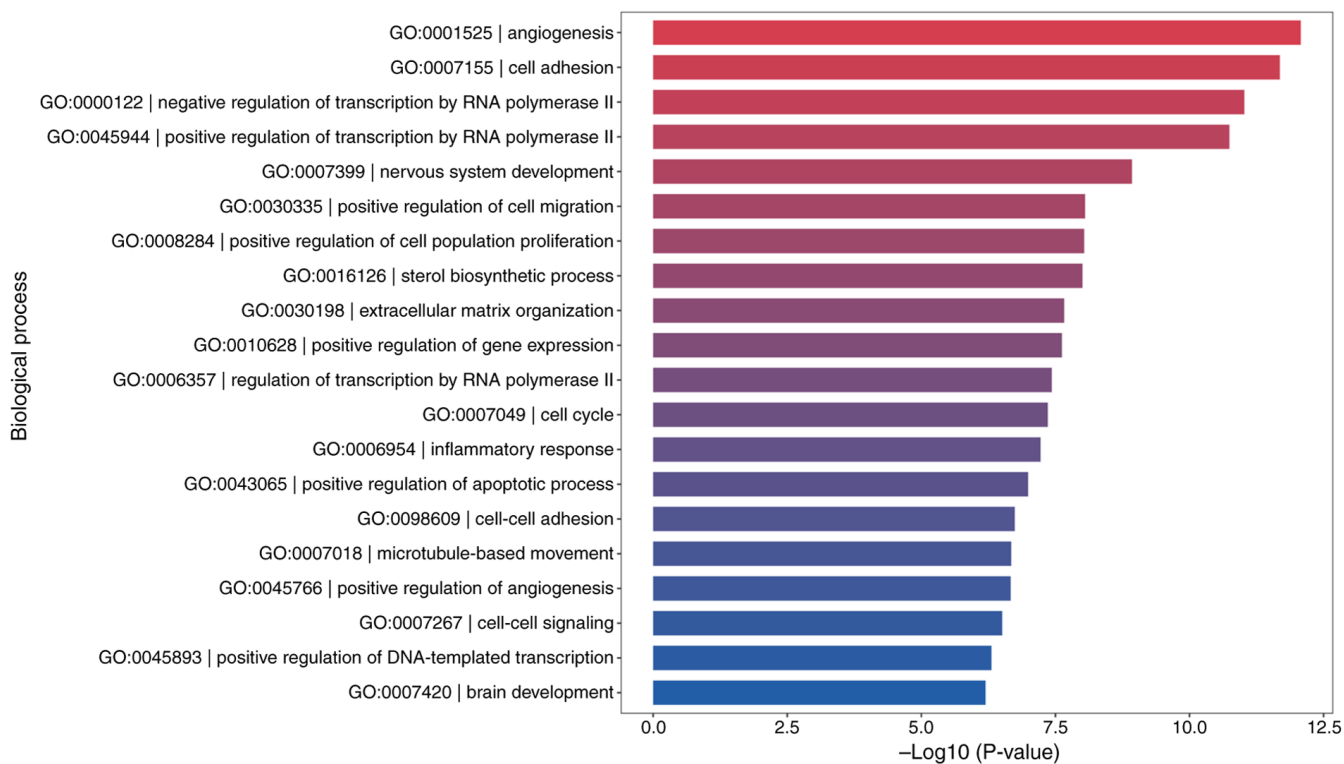


Figure S3. KLF2 confers protection by suppressing NLRP3 activation. (A) Expression levels of (B) NLRP3, (C) GSDMD, (D) Caspase-1 and (E) IL-18 were assessed using western blot analysis in liver tissue (n=3). **P<0.01, ***P<0.001. KLF2, Kruppel-like factor 2; GSDMD, gasdermin D; si, small interfering.

