

Figure S1. Representative HPLC chromatogram of GLD. The analysis was performed at a detection wavelength of 232 nm. The major peak corresponding to GLD appeared at a retention time of 26.347 min with a peak area of 98.84%, indicating a purity of >98%. No internal standard was used. GLD, glaucocalyxin D.

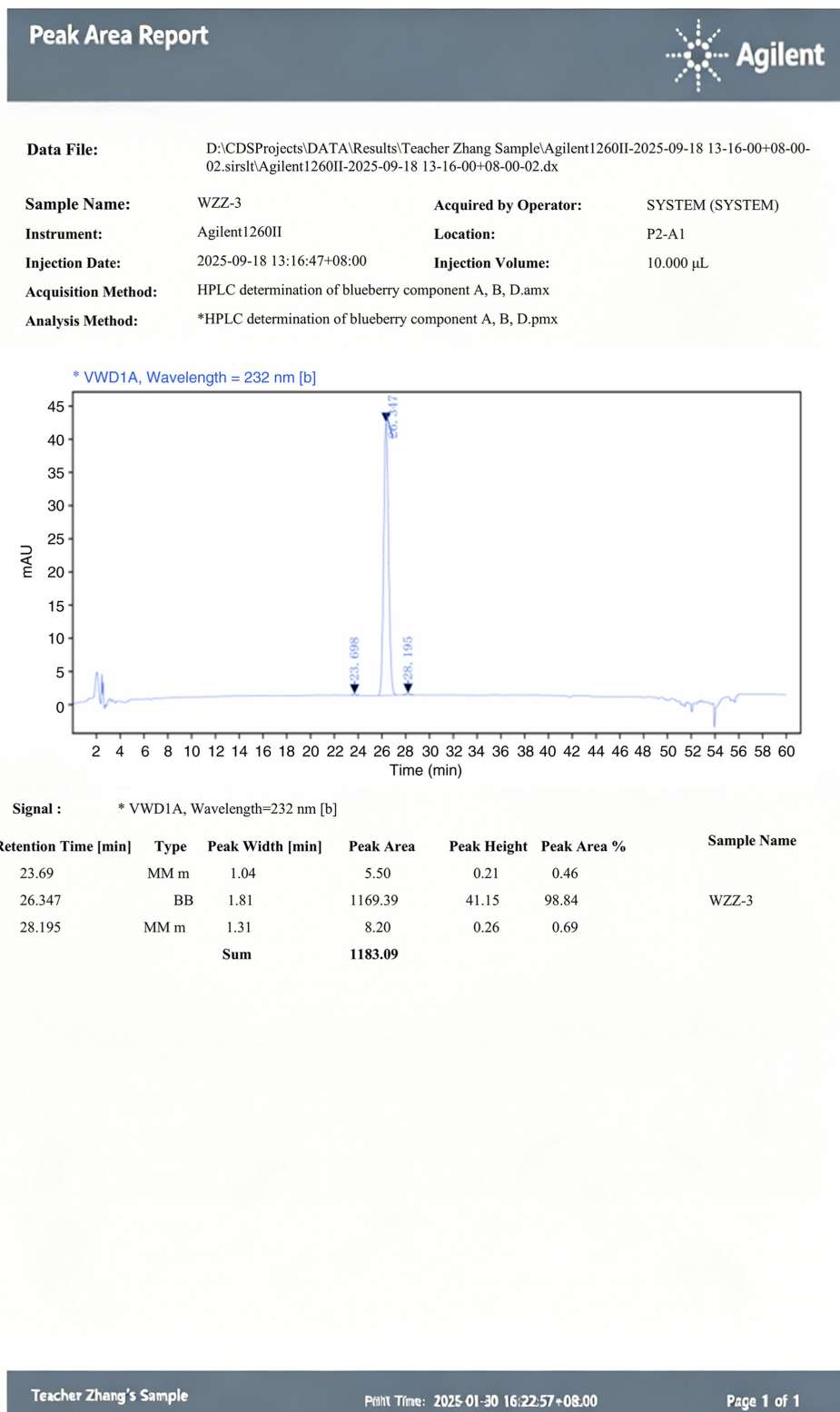


Figure S2. Representative ^1H NMR spectrum of GLD. The spectrum was recorded in deuterated solvent (CDCl_3) with tetramethylsilane as the internal standard. Chemical shifts (δ) are reported in parts per million. GLD, glaucocalyxin D. The Y-axis intensity is displayed as generated by the instrument (values $\times 10^{-12}$).

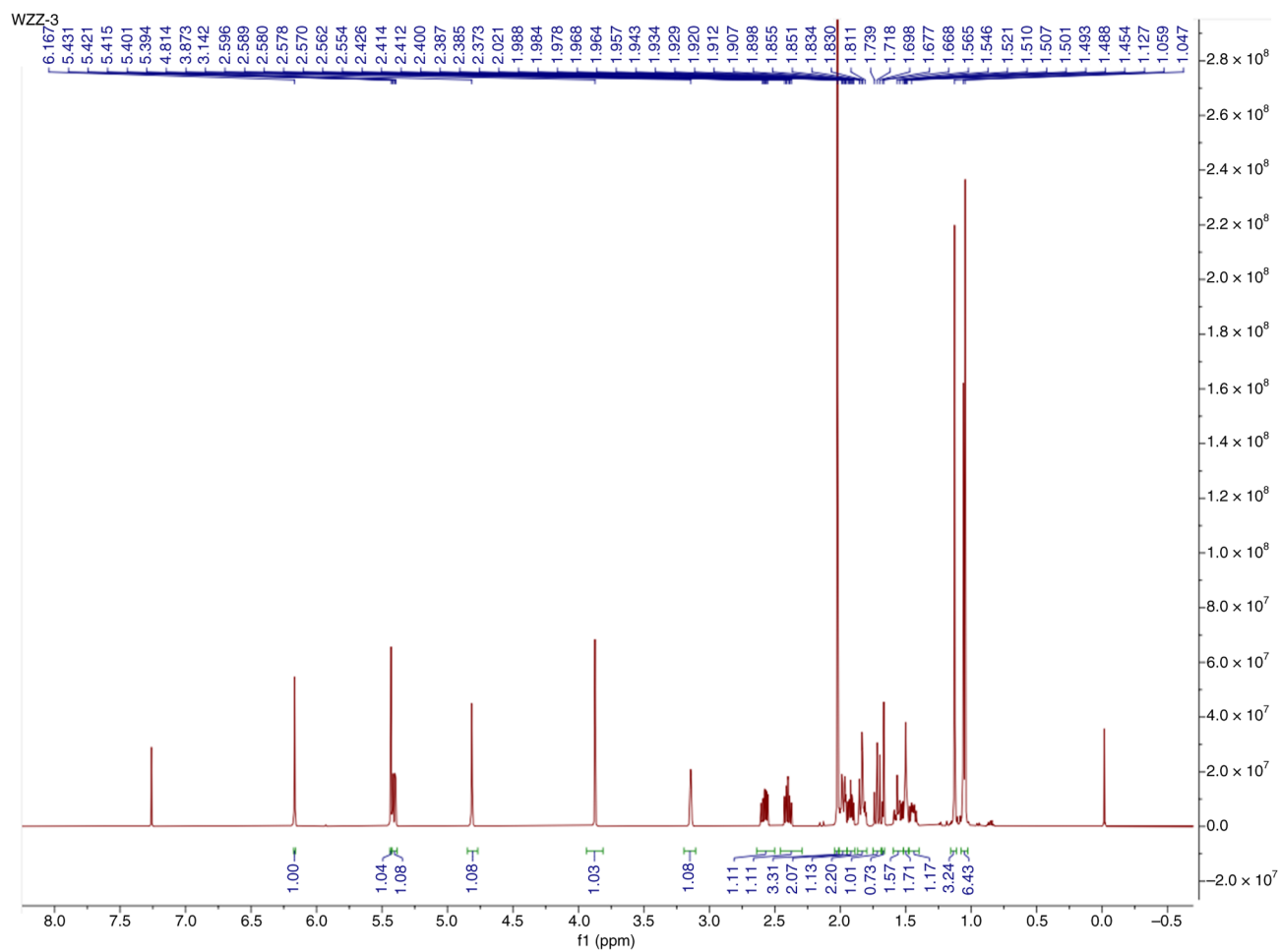


Figure S3. Representative ^{13}C NMR spectrum of GLD. The spectrum was recorded in deuterated solvent (CDCl_3) with tetramethylsilane as the internal standard. Chemical shifts (δ) are reported in parts per million. GLD, glaucocalyxin D.

