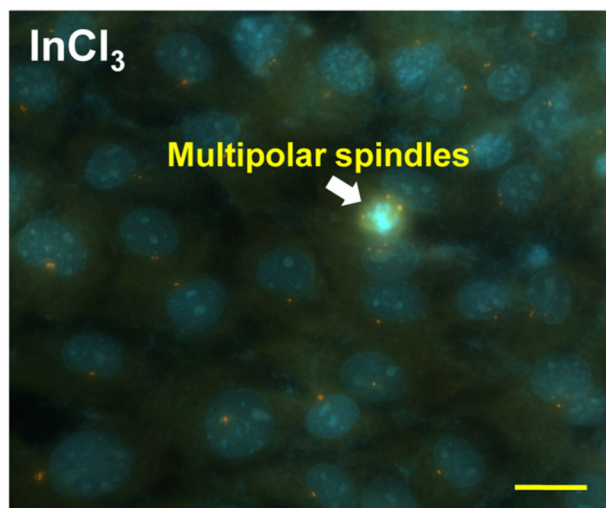
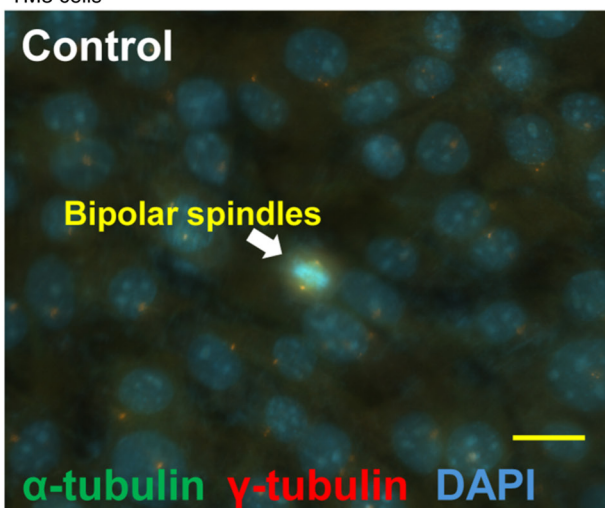


Figure S1. Treatment with InCl_3 led to aberrant mitotic spindles. Immunofluorescence staining of control and InCl_3 -treated TM3 (A) and MA-10 (B) cells with antibodies against γ -tubulin (centrosome) and α -tubulin (mitotic spindles). DNA was stained with DAPI. Scale bars, $20\ \mu\text{m}$. The mitotic spindles are indicated by white arrows. InCl_3 , indium chloride.

A

TM3 cells



B

MA-10 cells

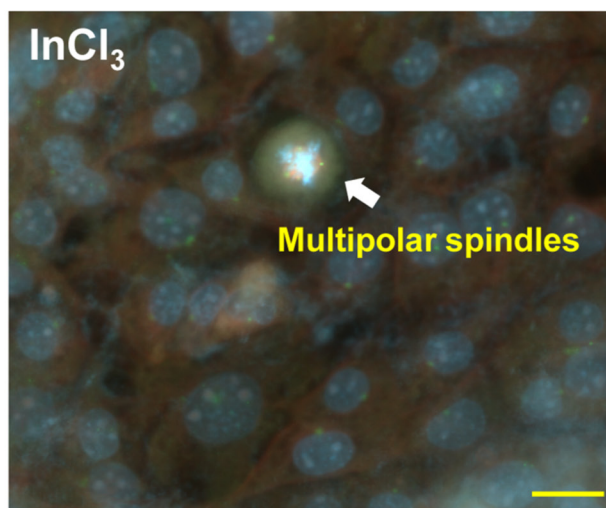
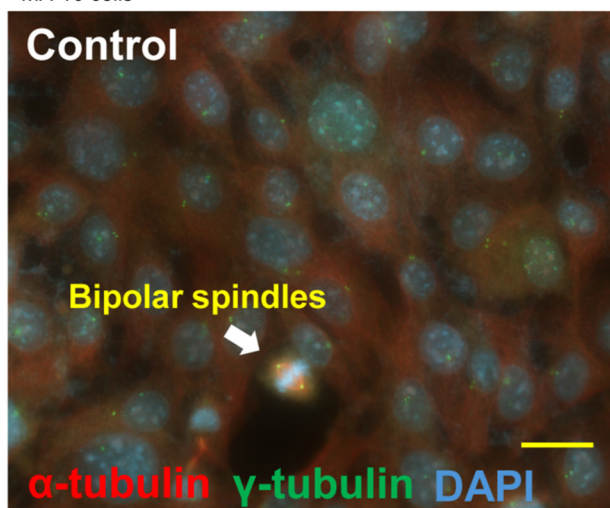


Figure S2. Treatment with InCl_3 leads to centrosome amplification. Immunofluorescence staining of Control and InCl_3 -treated TM3 (A) and MA-10 (B) cells with antibodies against γ -tubulin (centrosome). DNA was stained with DAPI. Scale bars, $20 \mu\text{m}$. The centrosome amplification is indicated by white arrows. InCl_3 , indium chloride.

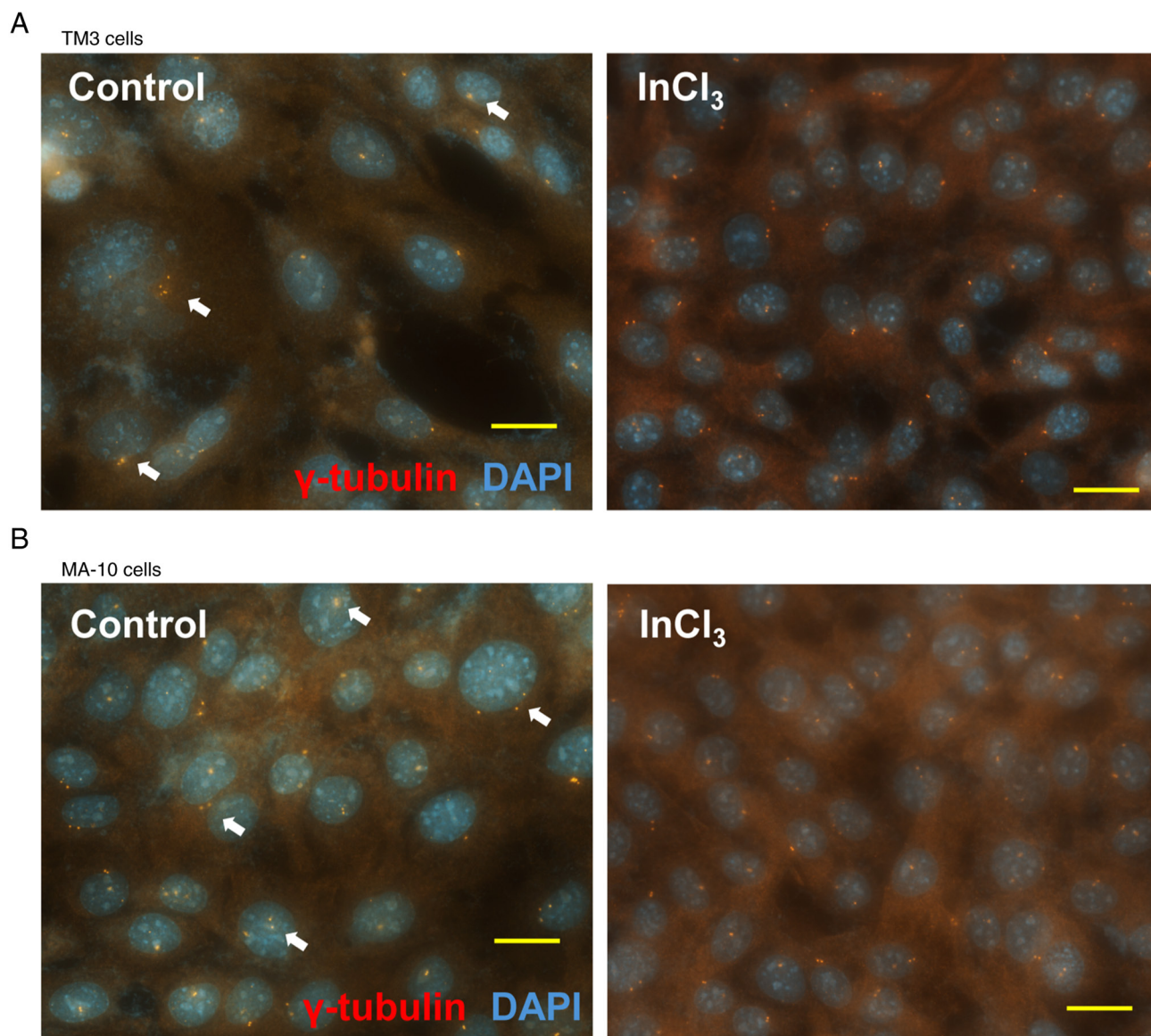


Figure S3. Treatment with NAC alleviates InCl_3 -induced centrosome amplification. Representative immunofluorescence images of cells subjected to the indicated treatments, stained with an antibody against γ -tubulin. DNA was counterstained with DAPI. Scale bars, 20 μm . The centrosome amplification is indicated by white arrows. InCl_3 , indium chloride.

TM3 cells

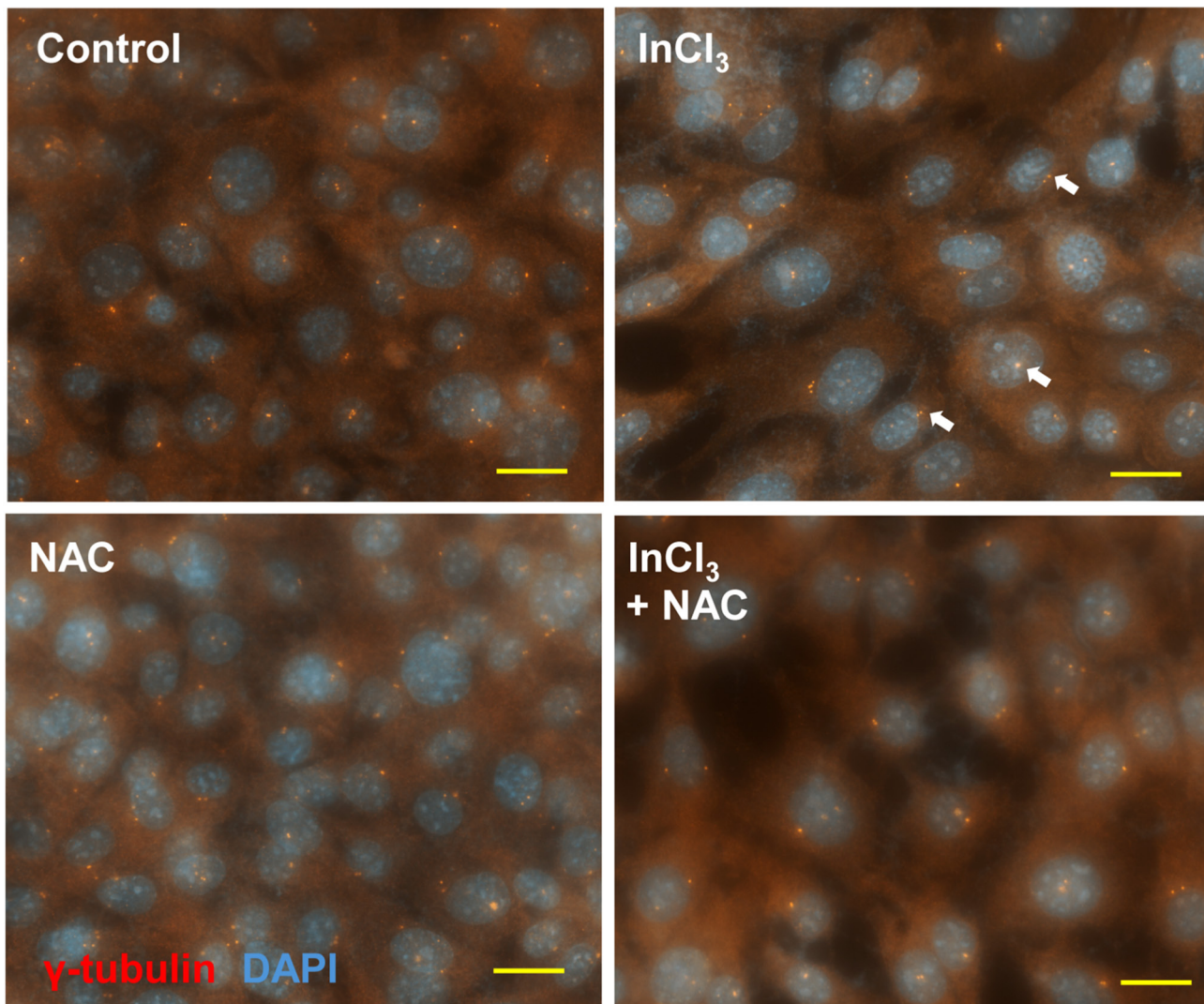
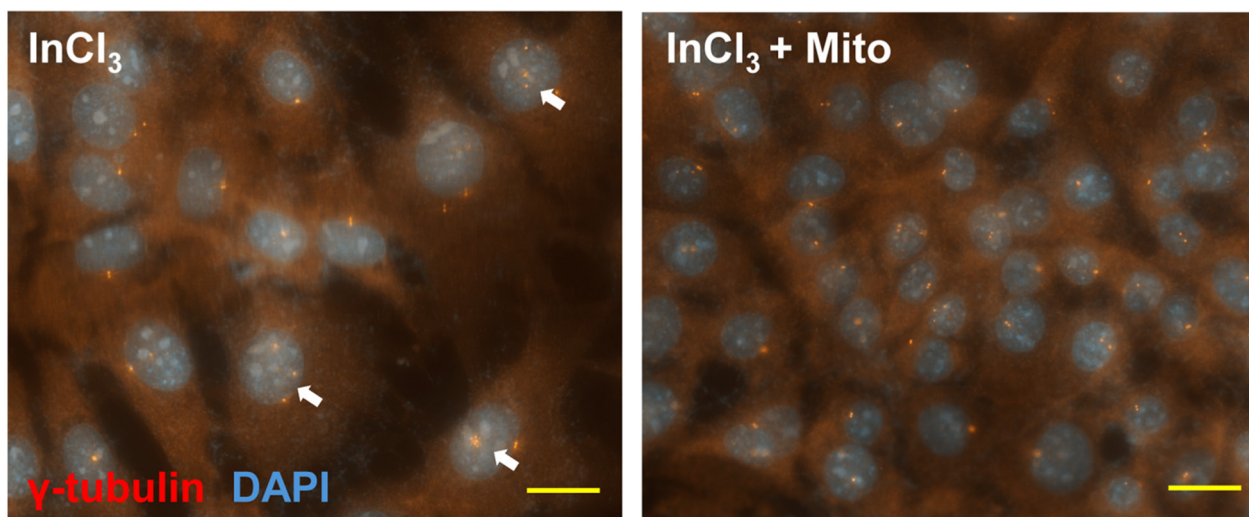


Figure S4. Inhibition of ROS alleviates InCl_3 -induced centrosome amplification. Representative immunofluorescence images of cells subjected to the ROS inhibitors (A) Mito or (B) DPI under InCl_3 treatment, stained with an antibody against γ -tubulin. DNA was counterstained with DAPI. Scale bars, 20 μm . The centrosome amplification is indicated by white arrows. ROS, reactive oxygen species; InCl_3 , indium chloride; DPI, diphenyleneiodonium.

A



B

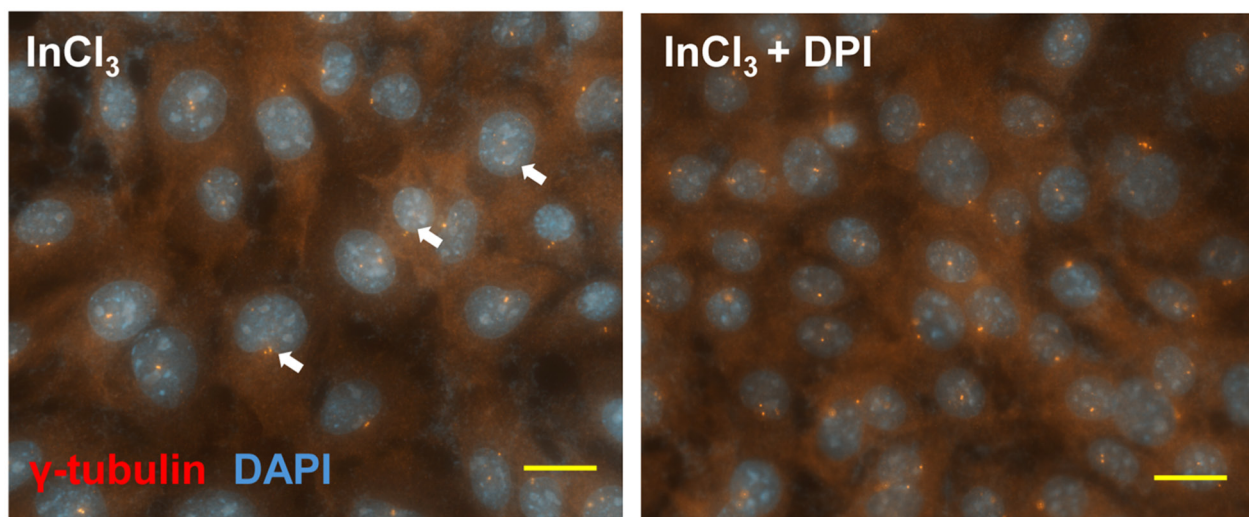


Figure S5. DNA-PK induces centrosome amplification upon InCl_3 treatment. Representative immunofluorescence images of cells subjected to (A) vanillin (DNA-PK inhibitor) or (B) siPKcs in the presence of InCl_3 , stained with an antibody against γ -tubulin. DNA was counterstained with DAPI. Scale bars, 20 μm . The centrosome amplification is indicated by white arrows. DNA-PK, DNA-dependent protein kinase; InCl_3 , indium chloride; siPKcs, small interfering RNA against DNA-PKcs.

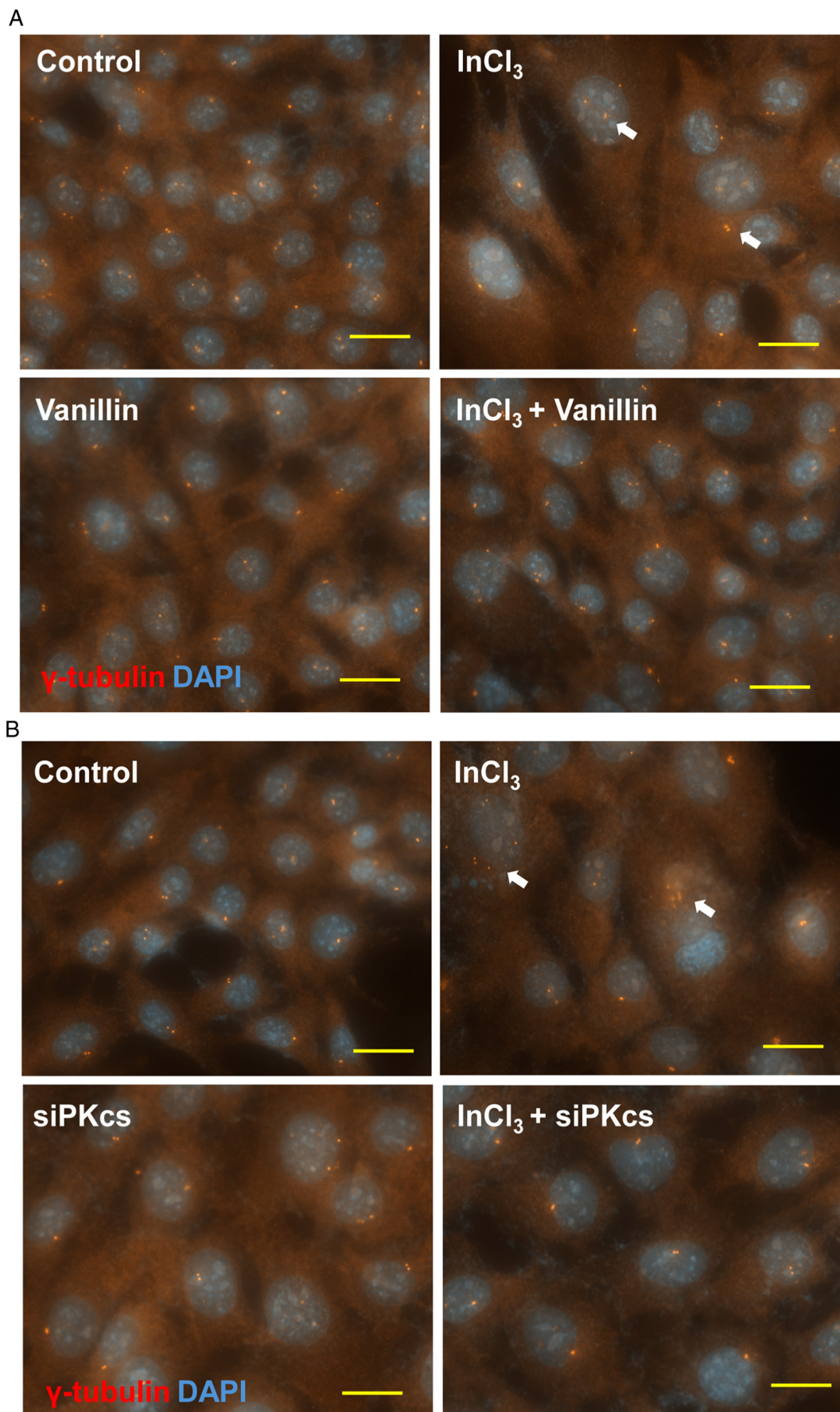
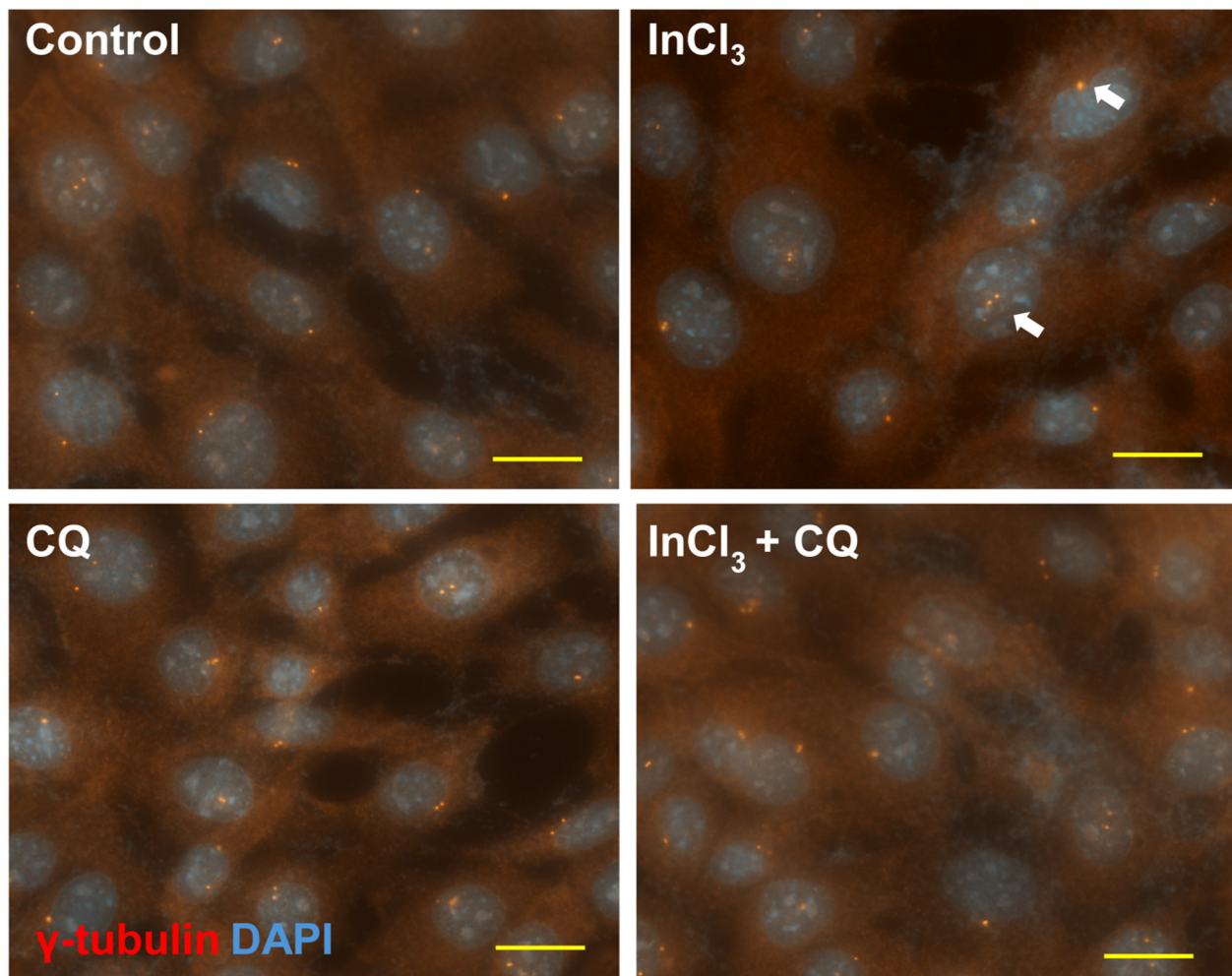


Figure S6. Autophagy induces centrosome amplification upon InCl_3 treatment. Representative immunofluorescence images of cells subjected to (A) CQ or (B) siATG7 in the presence of InCl_3 , stained with an antibody against γ -tubulin. DNA was counterstained with DAPI. Scale bars, $20\ \mu\text{m}$. The centrosome amplification is indicated by white arrows. CQ, chloroquine; ATG7, autophagy related 7; InCl_3 , indium chloride; siATG7, small interfering RNA against ATG7.

A



B

