

Figure S1. B-mode ultrasound. Evaluation of the morphology and echogenicity of the lesion, supplemented by color Doppler ultrasound to assess vascularity. For example, in the left adnexal region, a hypoechoic lesion measuring $\sim 72 \times 38$ mm was detected, closely related to the uterus, with visible blood flow signals on color Doppler.

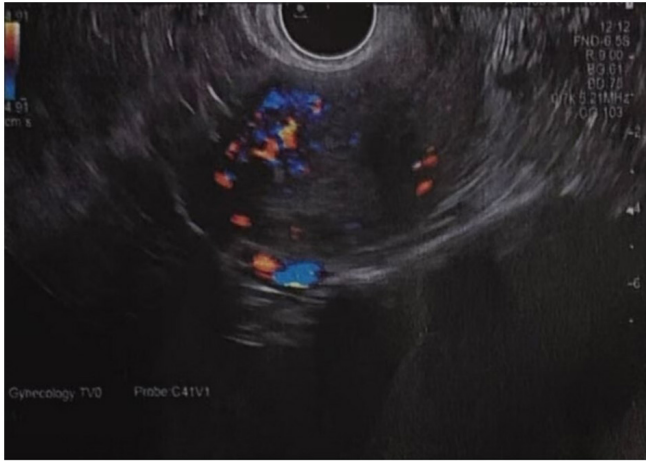


Figure S2. Color Doppler ultrasound. The area indicated by the arrow is the intravenous leiomyomatosis of the uterus.

