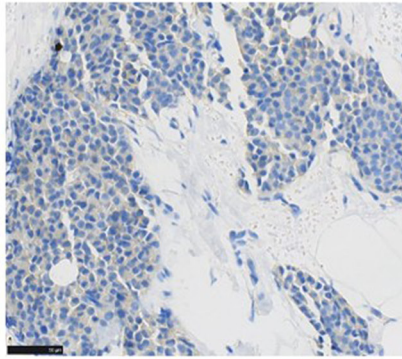
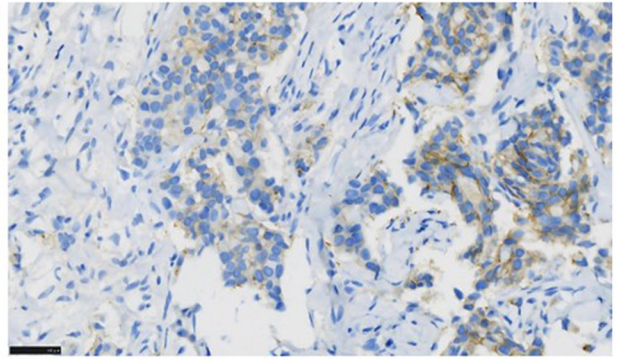


Figure S1. HER2 immunohistochemistry. Scale bar, 50 μ m.

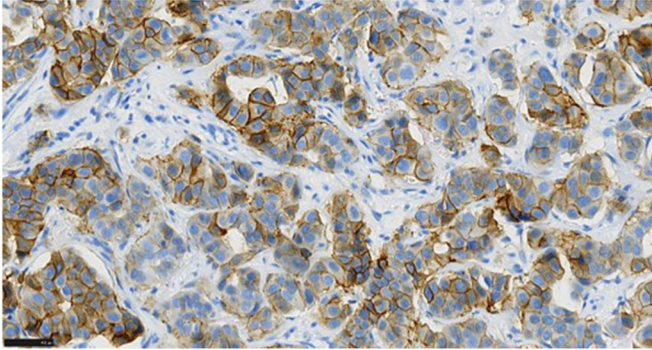
HER2 (0+)



HER2 (1+)



HER2 (2+)



HER2 (3+)

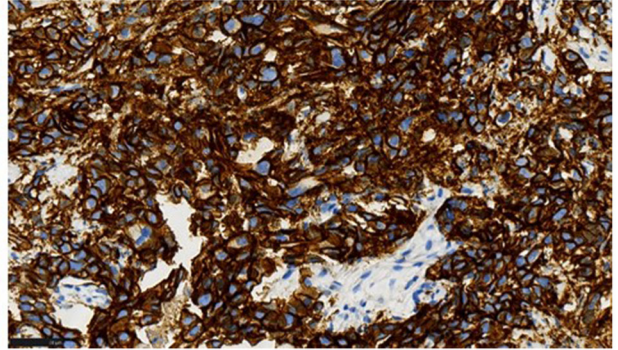


Figure S2. Immunohistochemistry results for subject 13 before treatment. Magnification, x40. ER, estrogen receptor; PR, progesterone receptor; AR, androgen receptor; DCLK1, doublecortin-like kinase 1; EC, E-cadherin. Scale bar, 50 μ m.

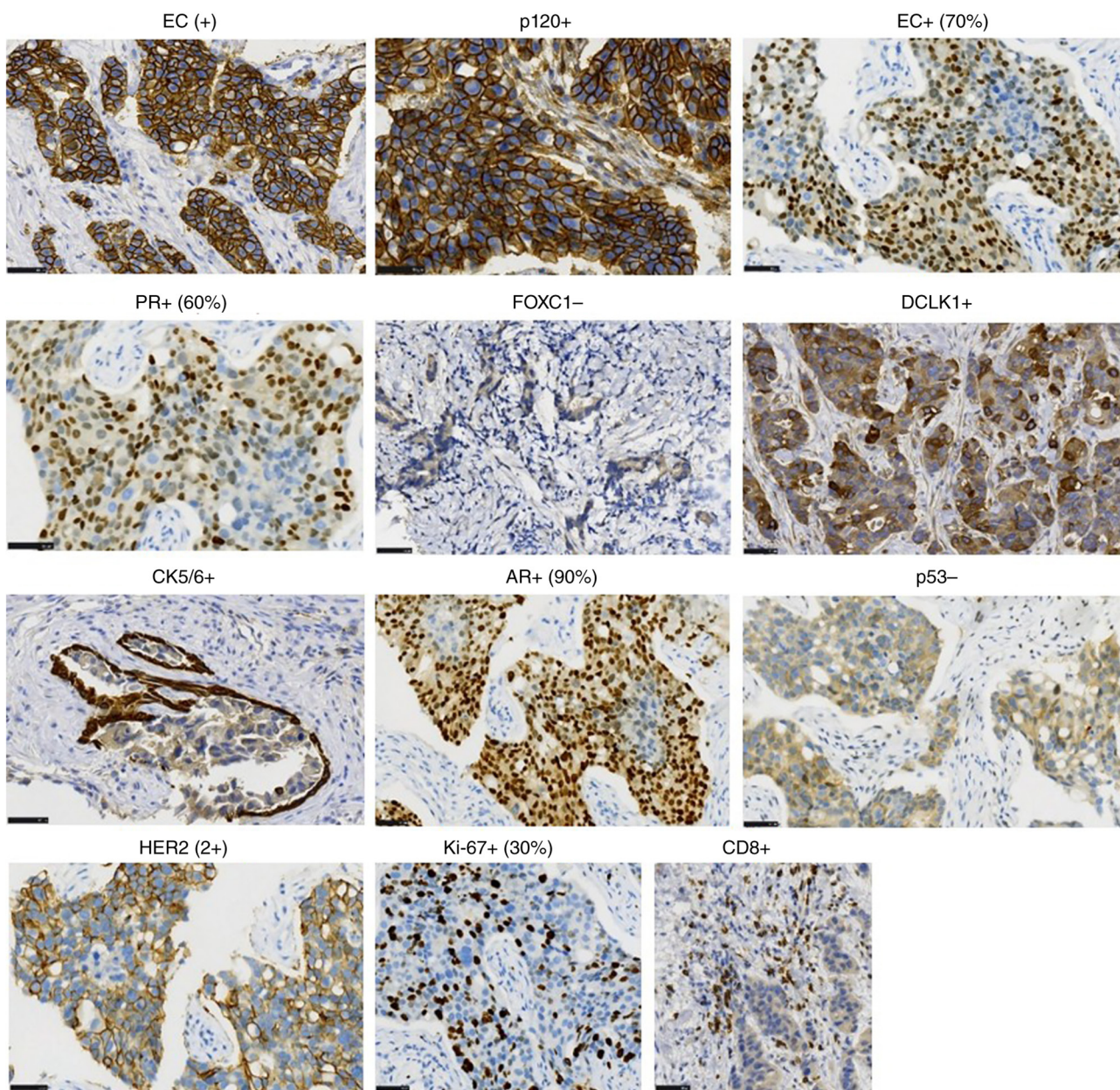


Figure S3. HER2 fluorescence *in situ* hybridization for subject 13 before treatment. CEP17, centromere of chromosome 17. Scale bar, 5 μ m.

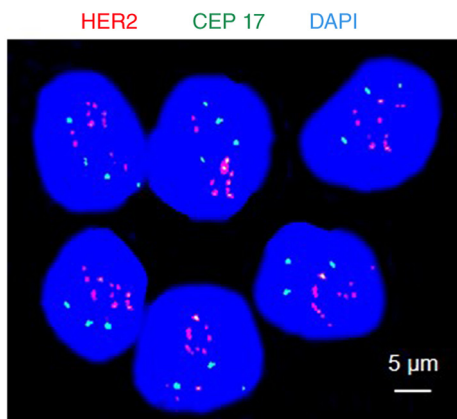


Figure S4. Immunohistochemistry results for subject 13 following treatment. Magnification, x40 magnification. ER, estrogen receptor; PR, progesterone receptor; AR, androgen receptor. Scale bar, 50 μ m.

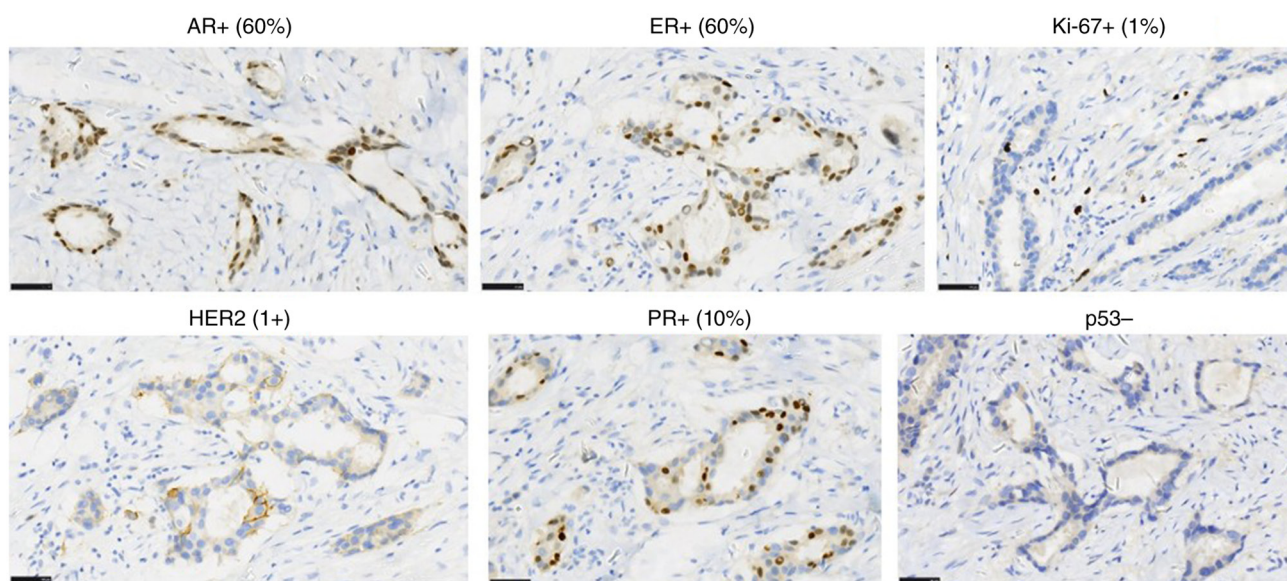


Figure S5. Immunohistochemistry results for subject 4 before treatment. Magnification, x40. Pax-8, paired box-8; WT1, Wilms' tumor-1; TTF-1, thyroid transcription factor 1; D2-40, podoplanin. Scale bar, 50 μ m.

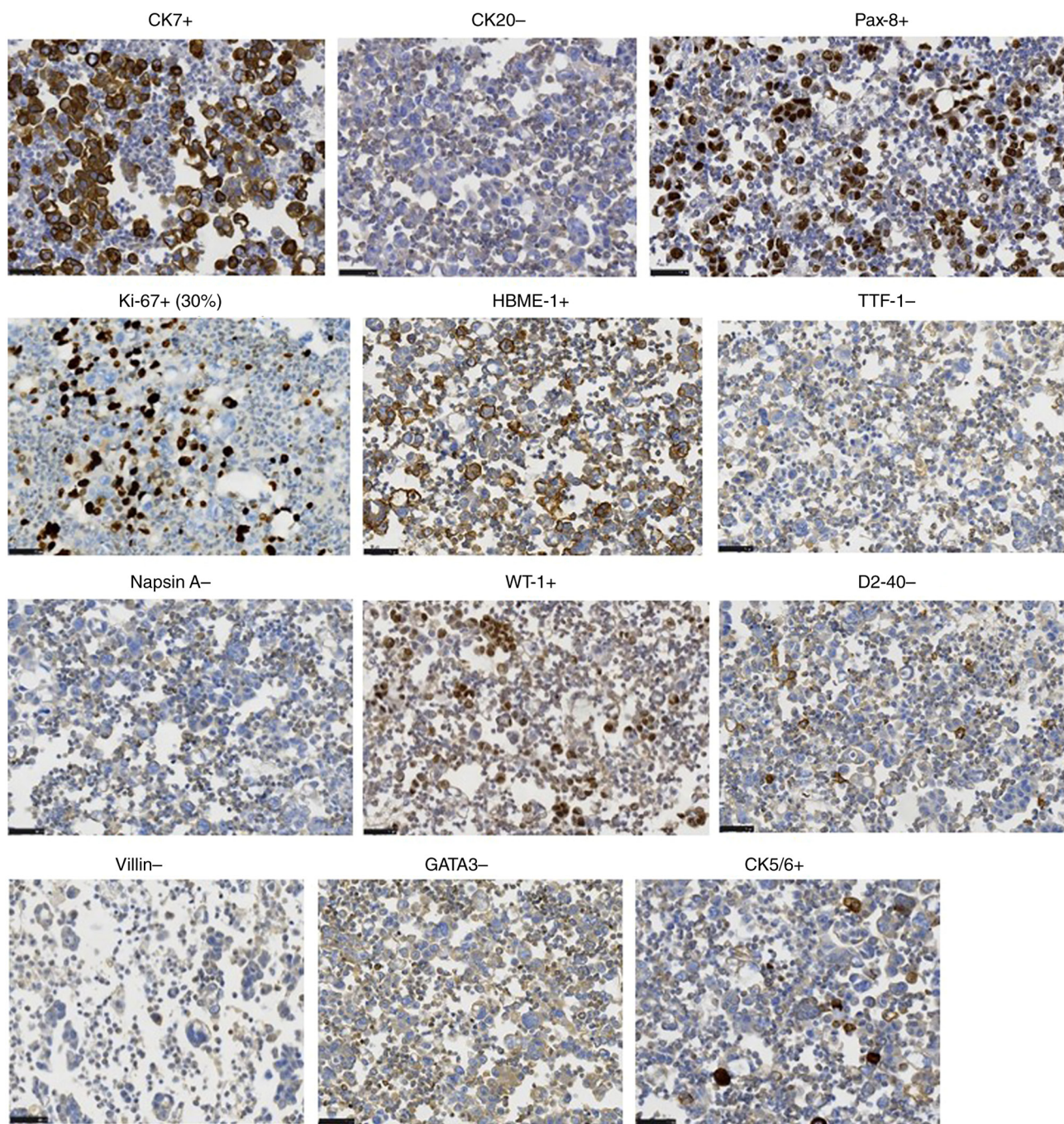


Figure S6. Immunohistochemistry results for subject 8 before treatment. Magnification, x40 magnification. ER, estrogen receptor; PR, progesterone receptor; AR, androgen receptor; DCLK1, doublecortin-like kinase 1; EC, E-cadherin. Scale bar, 50 μ m.

