

Figure S1. Cumulative incidence rate of pancreatic tumor in KPC mice in our preliminary experiment.

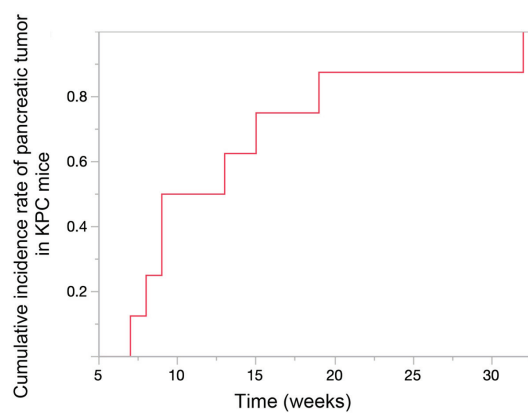


Figure S2. Representative images of immunohistochemistry with GFP, Ly6G and F4/80 in the experimental liver micrometastases at days 1-3. Scale bar, 100 μm .

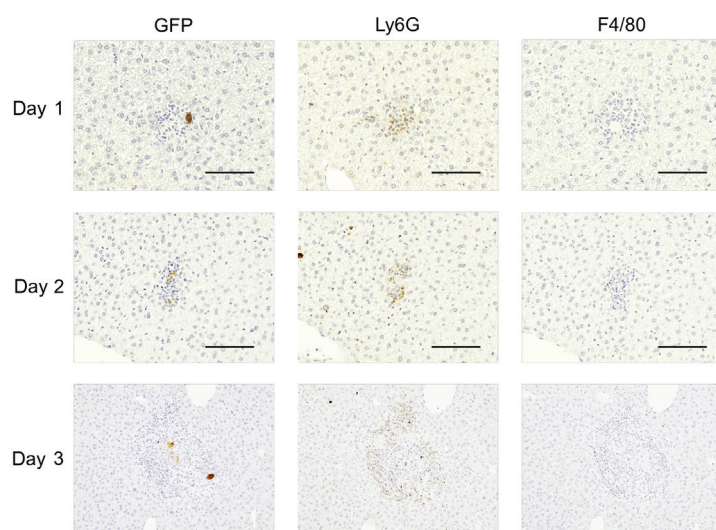


Figure S3. Effect of DNase I on the viability of pancreatic cancer cells (PCCs; PCC1; top panel) and human hepatic stellate cells (HSCs; bottom panel) measured by cell proliferation assay. Data shown represent the means \pm SD.

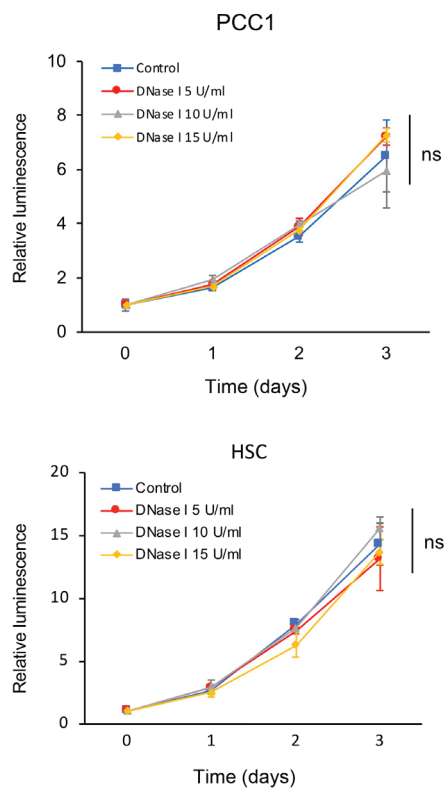


Figure S4. Expression levels of Acta2 and Col1A1 in HSCs with or without neutrophils and cancer cells. Data shown represent the means \pm SD.

