

Figure S1. Staining of suspension cells and adherent cells isolated from heart. (A) Immunostaining of DAPI (blue) and cardiomyocyte marker cTnI (green) in suspension cells. (B) Immunostaining of DAPI (blue) and fibroblast marker vimentin (green) in adherent cells. Scale bar, 100  $\mu$ m.

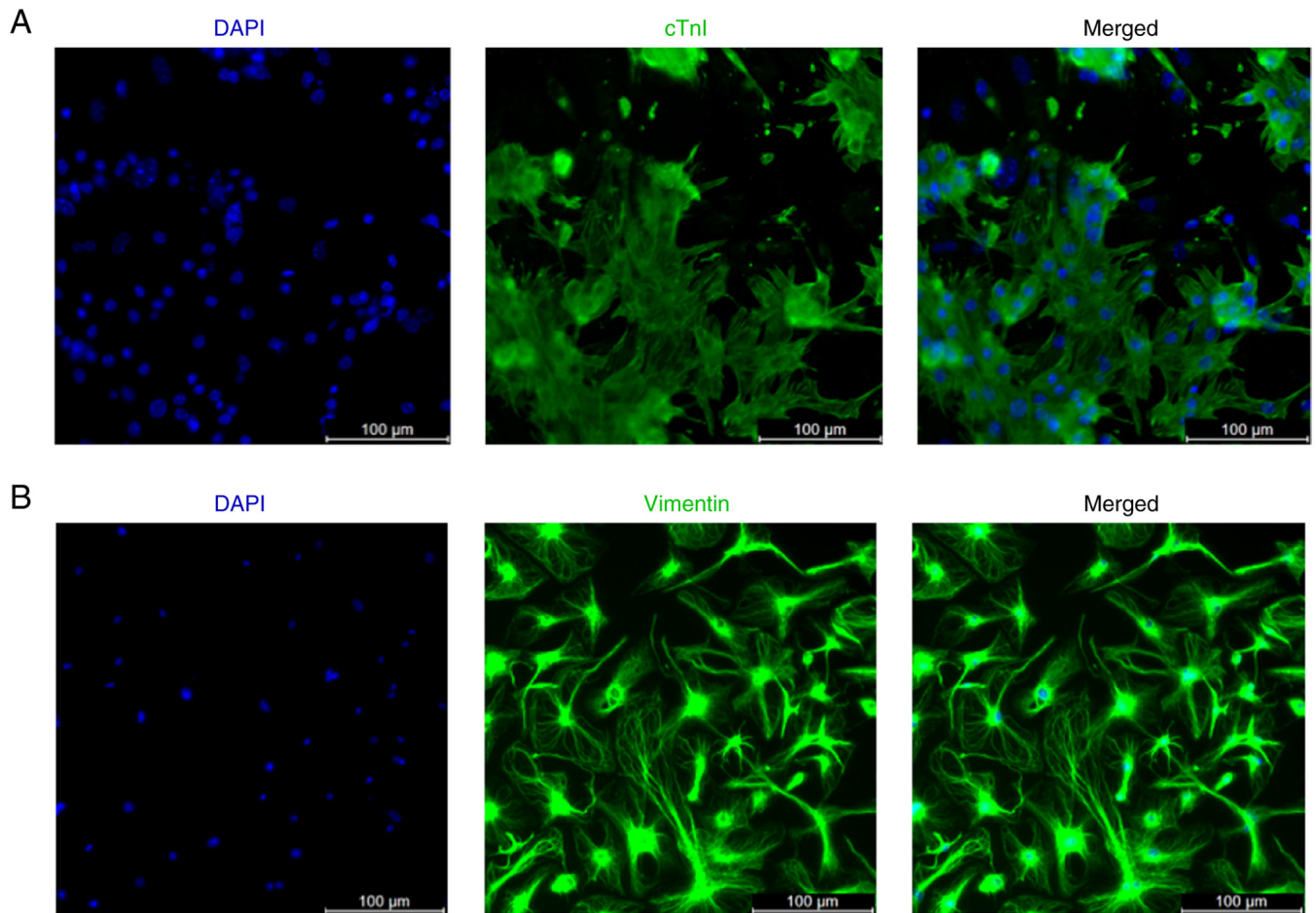


Figure S2. Downregulation of NDUFA13 promoted DNA replication in primary cardiomyocytes. (A) The cell cycle distribution patterns between the control and si-*Ndufa13* group (n=4), which was then (B) quantified. The data was presented as mean  $\pm$  SD. \*P<0.05 compared with control group. NDUFA13, NADH dehydrogenase ubiquinone I  $\alpha$  subcomplex 13; si-, short interfering.

