

Figure S1. Representative images of positive control immunohistochemical staining for (A) CD3, (B) CD8, (C) CD163, (D) FOXP3 and (E) FAP. Human tonsil tissue was used as a positive control for CD3, CD8, CD163 and FOXP3, whereas human breast cancer was used for FAP. All images were obtained at a magnification of x200. FAP, fibroblast activation protein α .

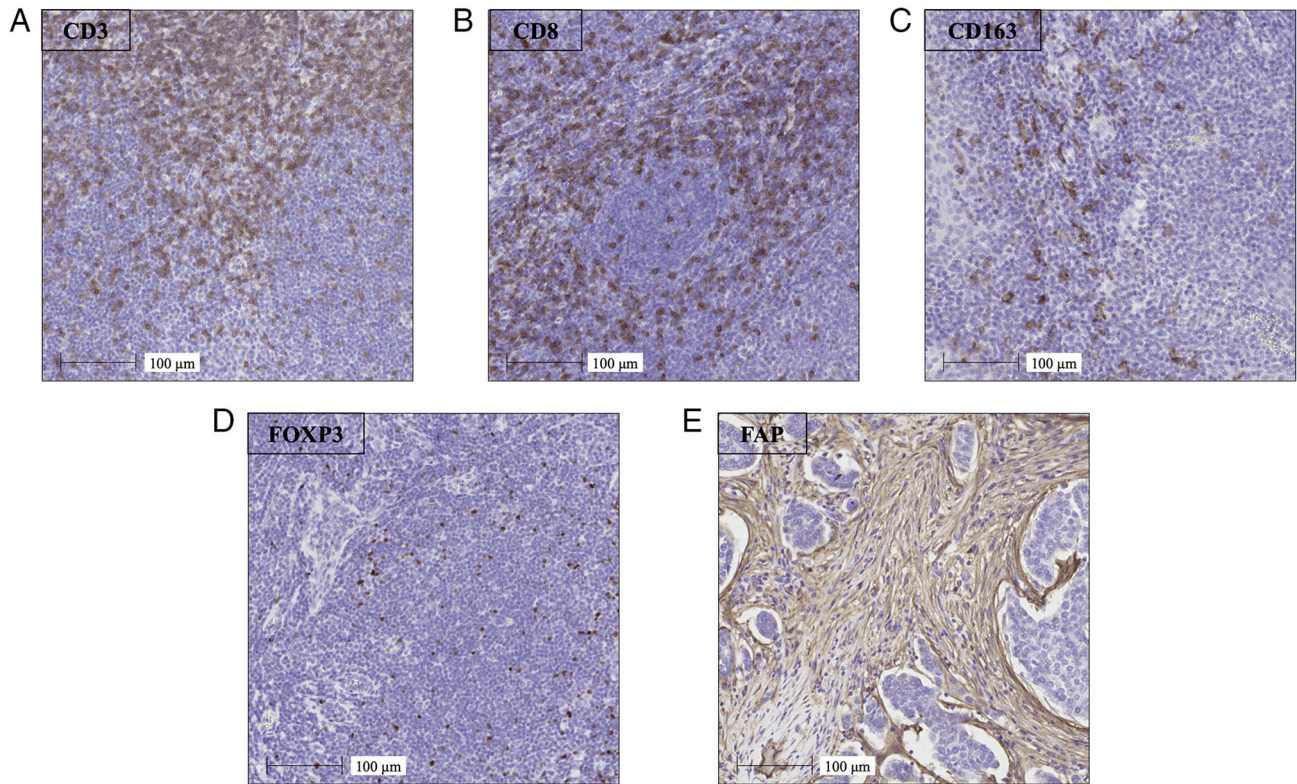


Figure S2. Representative images of tumor-infiltrating immune cell immunohistochemical staining for (A) FOXP3, (B) CD3, (C) CD8 and (D) CD163. Whole slides were scanned using HALO, and five hotspot regions were chosen in each slide (red box). The inset in the upper right corner shows a high-magnification image of one representative hotspot (blue box).

