

Figure S1. Recurrence rates and recurrence-free survival for SFI and PFI in the 3 types after PN. Recurrence rate of SFI and PFI for pT3a RCC with (A) type A, (B) type B and (C) type C. Recurrence-free survival of SFI and PFI for pT3a RCC with (D) type A, (E) type B and (F) type C. SFI, sinus fat invasion; PFI, perinephric fat invasion; RCC, renal cell carcinoma; PN, partial nephrectomy.

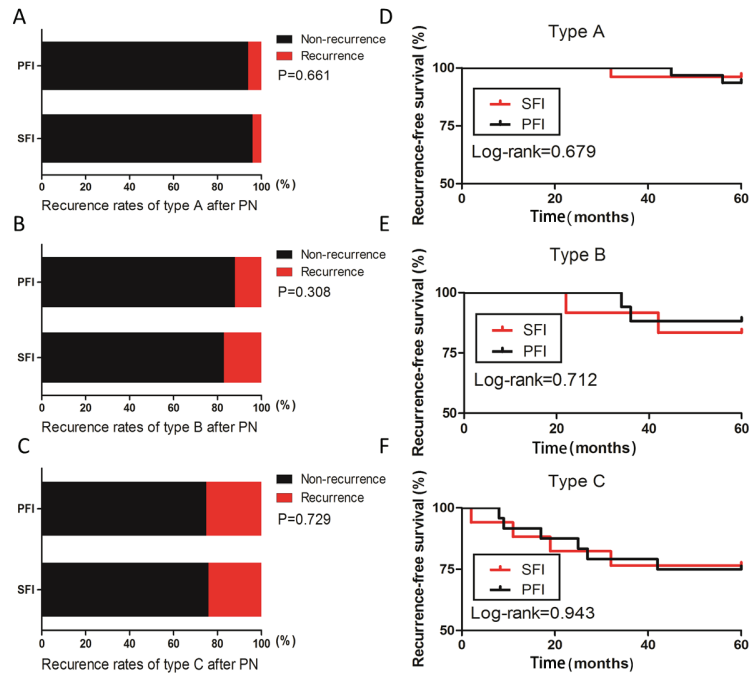


Table SI. Univariate Cox regression analysis for predictors of disease recurrence.

Variable	HR	95% Confidence interval	P-value
<b>Sex</b>			
Female	Ref.		
Male	0.714	0.256-1.988	0.519
Age	0.821	0.718-1.001	0.762
<b>Laterality</b>			
Left	Ref.		
Right	0.566	0.195-1.637	0.393
<b>Surgical approach</b>			
Open	Ref.		
Laparoscopic	1.267	0.415-3.862	0.678
Tumor size	1.321	0.323-1.972	0.692
<b>Histological type</b>			
Non-clear cell	Ref.		
Clear cell	1.833	0.634-5.306	0.264
<b>Fuhrman grade<sup>a</sup></b>			
Low (I-II)	Ref.		
High (III-IV)	0.754	0.266-2.139	0.596
<b>Margin status</b>			
Negative	Ref.		
Positive	0.797	0.093-6.804	0.836
<b>Sub-classification</b>			
Type A	Ref.		
Type B	0.865	0.237-1.352	0.273
Type C	1.734	0.978-3.425	0.009

<sup>a</sup>Graded according to Fuhrman SA, Lasky LC, Limas C: Prognostic significance of morphologic parameters in renal cell carcinoma. The American journal of surgical pathology 1982, 6(7): 655-663. HR, hazard ratio; Ref., reference.