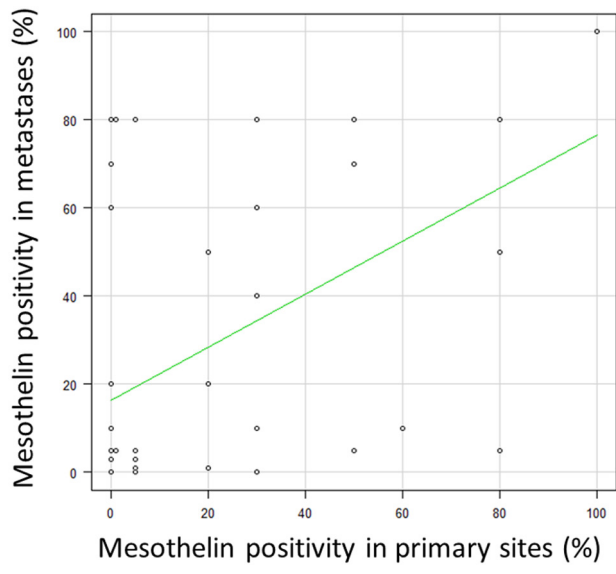


Figure S1. Correlation of mesothelin positivity between primary sites and their metastases. A total of 44 metastases were compared with their primary sites for mesothelin positivity (% positive cells). The Spearman's rank correlation coefficient was used for analysis.



$$\rho=0.484, P<0.0001$$

Figure S2. β -estradiol did not modulate mesothelin expression. CW-2 and SW48 colon cancer cells, established from female patients, and MCF-7 cells were cultured in DMEM supplemented with 10% activated charcoal-treated fetal bovine serum. β -estradiol was added at a concentration of 10 μ M for 24 h. ESR1, estrogen receptor 1.

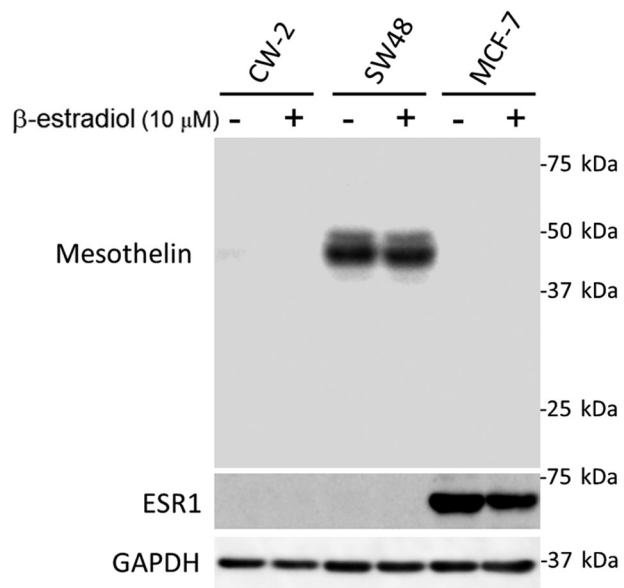


Figure S3. Mesothelin did not alter the migration and invasion of colon cancer cells. The (A) forced expression or (B) transient knockdown of mesothelin did not alter the migration and invasion of HCT116 and SW480 cells. Assays were performed in triplicate. Data are presented as the mean \pm standard deviation.

