

Figure S1. PD-L1 expression is positively associated with PDK1 and PFKM as revealed in GEPIA. Correlation analysis of PD-L1 and PDK1 and PFKM in GEPIA. PD-L1, programmed cell death 1 ligand 1.

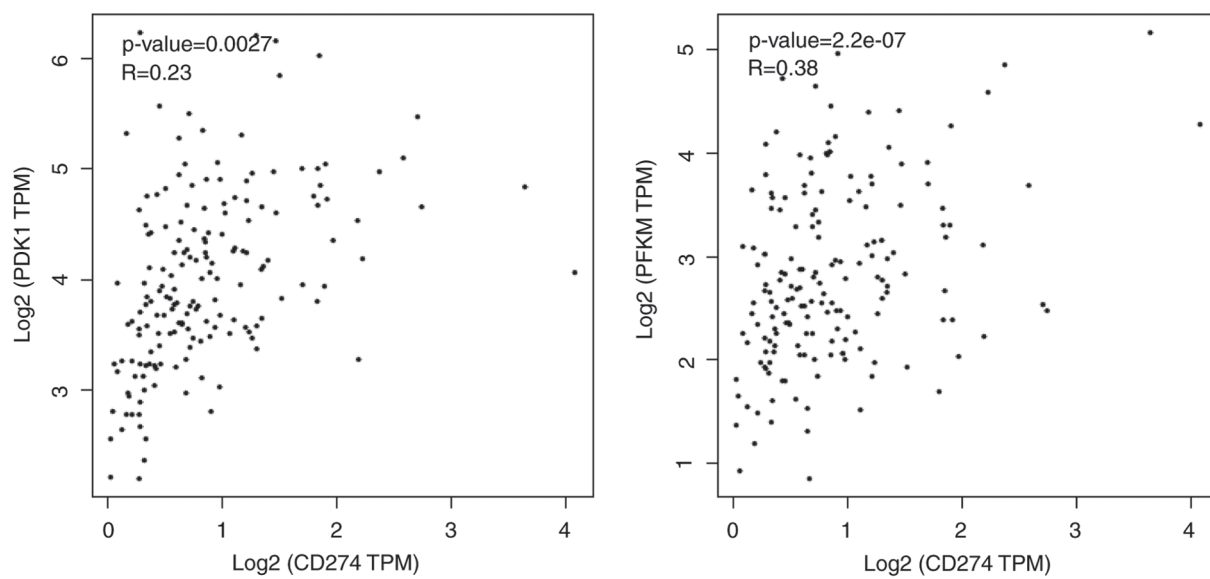


Figure S2. Knockdown of PD-L1 decreases glycolysis-associated gene expression. THP1 cells were infected with control lentivirus or PD-L1-sh1/sh2 lentivirus for 7 days and GFP⁺ tumor cells were selected by flow cytometry. PD-L1 expression in THP1 and PD-L1-sh1/2 THP1 were analyzed using (A) RT-PCR and (B) flow cytometry. (C) The protein levels of HK2 and LDHA were detected via western blotting. (D) The mRNA levels of HK2, ALDOA, PGK1 and LDHA were analyzed by RT-PCR. Data represent the results obtained from three independent experiments. **P<0.01 and ***P<0.001. PD-L1, programmed cell death 1 ligand 1.

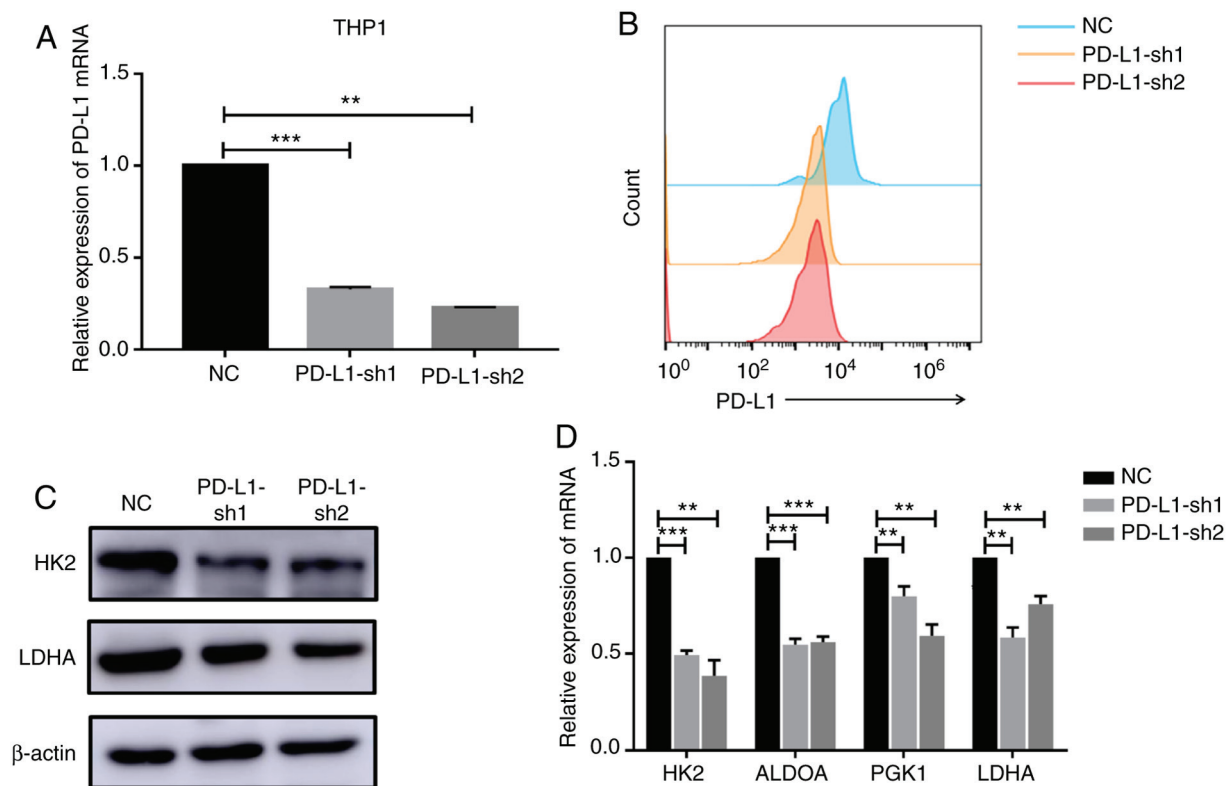


Figure S3. PD-L1 promotes AML cell proliferation. Blank, NC, PD-L1-OV MOLM-13 cells were cultured in 96-well plates for 1, 2, 3, 4 and 5 days, and cell proliferation were detected using a CCK-8 assay. Data represent the results obtained from three independent experiments. * $P < 0.05$, ** $P < 0.01$ and *** $P < 0.001$. PD-L1, programmed cell death 1 ligand 1; AML, acute myeloid leukemia; PD-L1-OV, PD-L1 overexpressed.

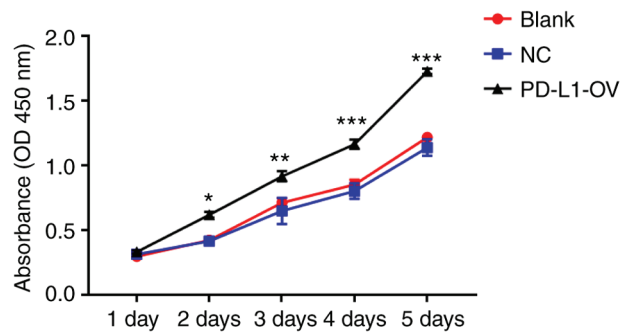


Table SI. Primer sequences used in this study.

PD-L1	F: GCTGCACTAATTGTCTATTGGGA R: AATTCGCTTGTAGTCGGCACC
PFKM	F: AGCTGCCTACAACCTGGTGA R: TCCACTCAGAACGGAAGGTGT
ALDOA	F: ATGCCCTACCAATATCCAGCA R: GCTCCCAGTGGACTCATCTG
PGK1	F: TGGACGTTAAAGGGAAGCGG R: GCTCATAAGGACTACCGACTTGG
PDK1	F: CTGTGATACGGATCAGAAACCG R: TCCACCAAACAATAAAGAGTGCT
LDHA	F: ATGGCAACTCTAAAGGATCAGC R: CCAACCCCAACAACCTGTAATCT
HK2	F: GAGCCACCACTCACCTACT R: CCAGGCATTTCGGCAATGTG
HIF-1 α	F: ATCCATGTGACCATGAGGAAATG R: TCGGCTAGTTAGGGTACACTTC
β -ACTIN	F: CCTGGCACCCAGCACAAT R: GGGCCGGACTCGTCATAC

F, forward; R, reverse; PD-L1, programmed cell death 1 ligand 1.