

Figure S1. Number and distribution of hospital beds in Brazil from 2005-2015. SUS, Sistema Único de Saúde (the Brazilian National Public Health System).

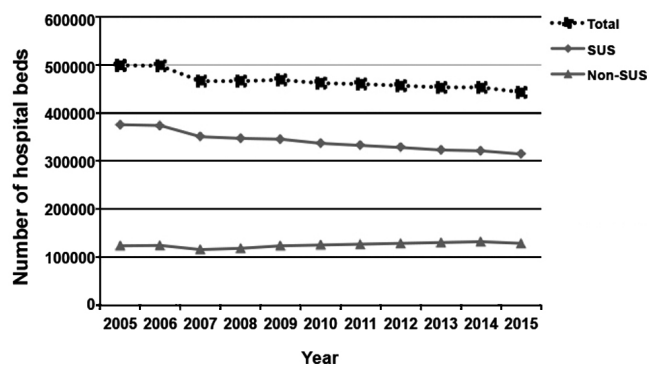


Figure S2. Geographical distribution of esophageal cancer in Brazil according to the municipal hospitalization rates (per 100,000 inhabitants) in the years 2005 and 2015. Standardized rates were defined by three ranges: <5, 5-15 and >15.

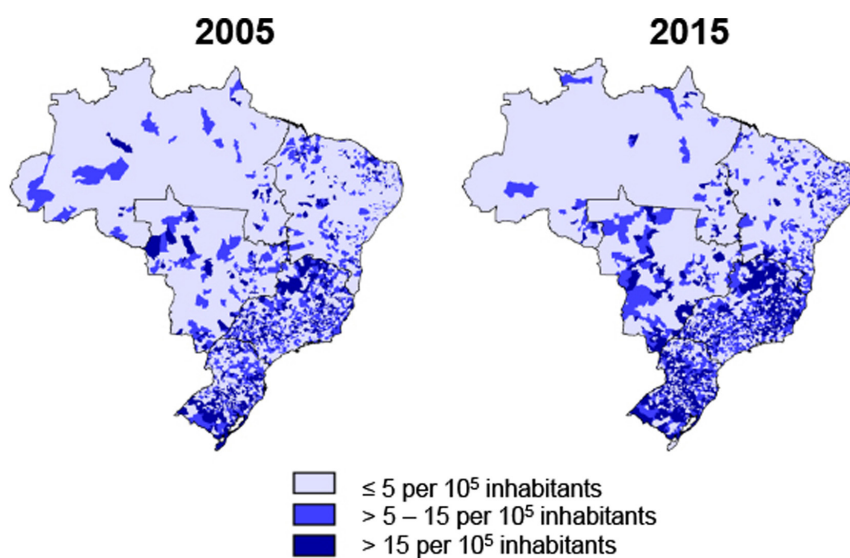


Figure S3. Geographical distribution of esophageal cancer lethality in Brazil according to municipal rates of in-hospital deaths in the years 2005 and 2015. Standardized rates were defined by four ranges: <25%, 25-49.9%, 50-75% and >75%.

