

Figure S1. There was no difference in survival time between Slug-positive and -negative PSCs or between Snail-positive and -negative PSCs. PSC, pulmonary sarcomatoid carcinoma.

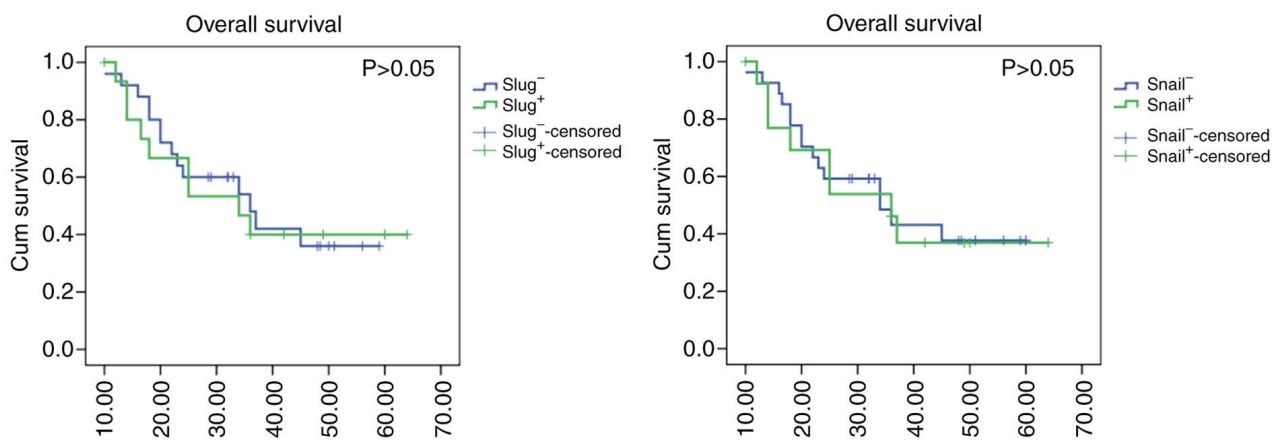


Figure S2. Twist1, Slug and Snail expression did not exhibit a prognostic significance for OS in PSCCs. OS, overall survival; PSCC, pulmonary squamous carcinoma.

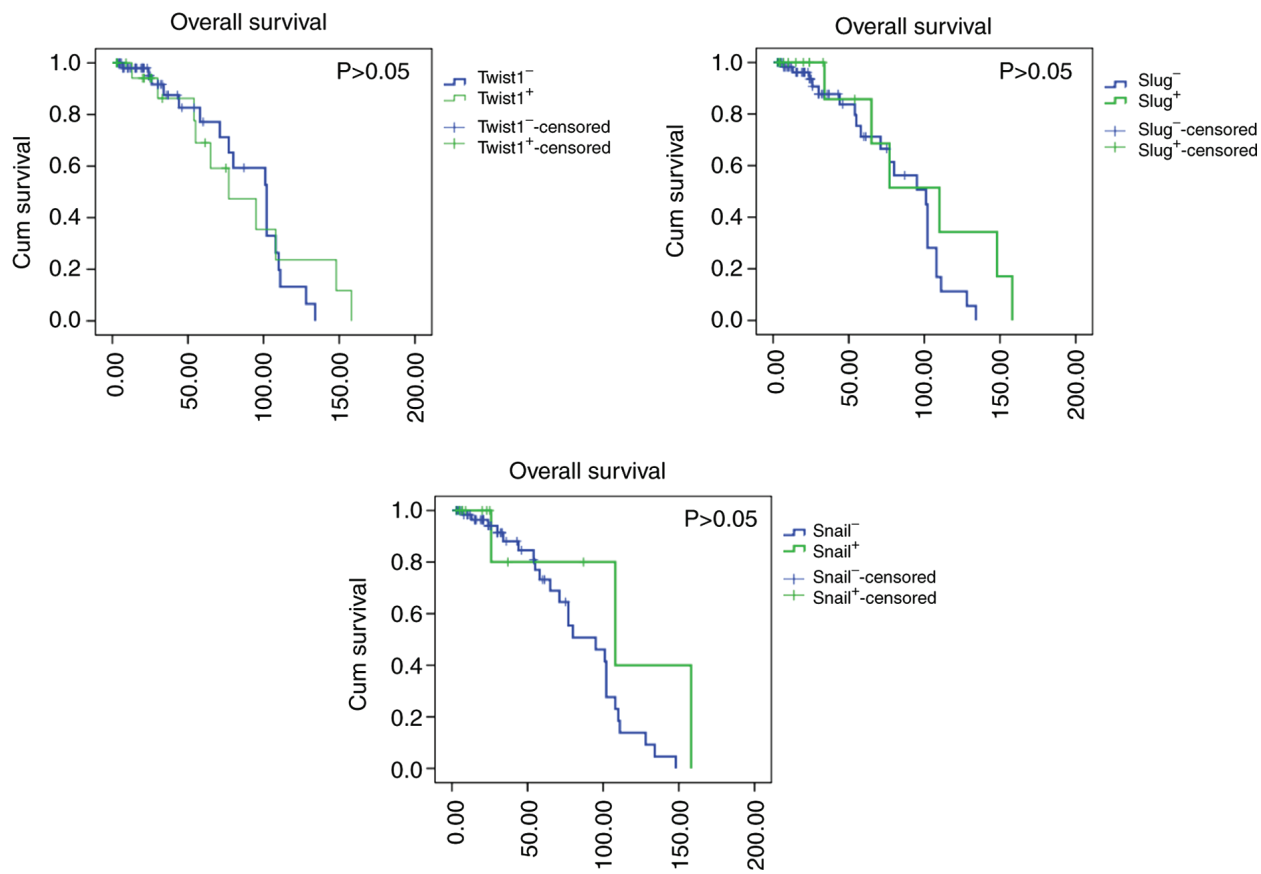


Figure S3. Western blot revealed Twist1 downregulation in SK-MES-1 cells that were cultured under standard conditions following shTwist1 vector transfection.

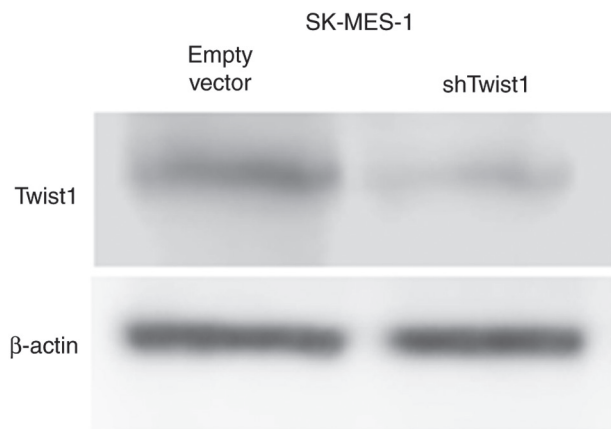


Table SI. Multivariate Cox regression analysis for OS in PSCs and PSCCs.

Characteristic	HR	PSCs	P-value	HR	PSCCs	P-value
Sex						
Male, female			0.575			
Age, years						
≥60 and >60			0.851			
Metastasis	7.105	2.768-18.237	<0.001 ^b			0.827
Yes, no						
Tumour size						
≥5 and <5 cm			0.721			0.994
Stage						
I, II, III			0.175	2.027	1.048-3.921	0.036 ^a
Grade						
I, II, III			NA			0.742
Twist1 expression						
Positive, negative	6.047	1.601-22.840	0.008 ^a			0.507
Slug expression						
Positive, negative			0.457			0.162
Snail expression						
Positive, negative			0.895			0.742

^aStatistical significance (P<0.05). HR, hazard ratio; NA, not applicable.