

Resveratrol abrogates the effects of hypoxia on cell proliferation, invasion and EMT in osteosarcoma cells through downregulation of the HIF-1 α protein

YONGMING SUN, HAIBIN WANG, MING LIU, FANGUO LIN and JUN HUA

Department of Orthopaedics, The Second Affiliated Hospital of Soochow University, Suzhou, Jiangsu 215004, P.R. China

Received November 16, 2013; Accepted June 16, 2014

DOI: 10.3892/mmr.2014.2913

Abstract. Resveratrol has been shown to have antineoplastic effects *in vivo* and *in vitro*. However, the effect of resveratrol on the hypoxia-enhanced proliferation and invasion of osteosarcoma cells remains unclear. In this study, we investigated the role of resveratrol on regulating proliferation and invasion of osteosarcoma cells under hypoxic conditions. Saos-2 cells were cultured under controlled hypoxic conditions (3% O₂) or normoxic conditions. Resveratrol (50 μ M) was added in the medium, and hypoxia inducible factor-1 α (HIF-1 α) siRNA was used to inhibit *HIF-1 α* transcription. Proliferation of Saos-2 cells was evaluated by the methabenzthiazuron (MTT) assay. The invasive ability of Saos-2 cells was determined by a Transwell assay. HIF-1 α , E-cadherin and vimentin protein levels were detected by western blot analysis. *HIF-1 α* , *E-cadherin* and *vimentin* mRNA levels were assessed by RT-PCR. Compared to the control group, hypoxia significantly increased the proliferation rate and invasive ability of Saos-2 cells. Moreover, hypoxia markedly increased the E-cadherin level and decreased vimentin expression. However, resveratrol or *HIF-1 α* silencing reverted all the above effects of hypoxia in Saos-2 cells. Moreover, resveratrol inhibited HIF-1 α protein accumulation without affecting the HIF-1 α mRNA level. These data suggest that resveratrol can inhibit the hypoxia-enhanced proliferation, invasion and epithelial to mesenchymal transition process in osteosarcoma via downregulation of the HIF-1 α protein. Thus, HIF-1 α may be a promising drug target of resveratrol in the context of development of anticancer therapy for human osteosarcoma.

Introduction

Osteosarcoma is the most common bone primary malignant tumor and mostly occurs in late childhood and early

adulthood (1). The application of adjuvant chemotherapy has increased the overall survival rate of osteosarcoma patients to more than 70% (2). However in patients with metastasis or recurrence, prognosis remains poor, with survival rates of only 20-30% (3,4). Without formal treatment, osteosarcoma cells tend to metastasize to new body sites, most commonly to the lung, within 6 months to 1 year, eventually leading to death (5). The mechanisms underlying progression and metastasis of this cancer type are only beginning to be elucidated, and novel, effective therapeutic agents are urgently needed.

Intratumoral hypoxia is a typical feature of solid tumors. It is mainly due to the abnormal formation of vasculature in the rapidly growing tumor mass. Tumor hypoxia has been correlated to increased tumor invasion, angiogenesis and distant metastasis (6-8). The adaptation of tumor cells to hypoxia has given rise to tumor heterogeneity and the selection of resistant clones, evolving into a more aggressive phenotype (9). The transcription factor hypoxia inducible factor-1 α (HIF-1 α) mediates cellular responses to hypoxia. Overexpression of the HIF-1 α protein has been reported in numerous solid tumors and their metastases (9). Stabilization and activation of the HIF-1 α /HIF-1 β transcription complex is closely associated with cell proliferation, metastasis, angiogenesis, epithelial to mesenchymal transition (EMT), increased resistance to chemotherapy and radiotherapy, and tumor progression (10-15). Hence, it is likely that HIF-1 α may be used as an independent prognostic marker and as a predictor of the mortality risk and treatment failure in tumors (16-19).

Resveratrol (3,4',5-trihydroxystilbene) is a natural polyphenolic phytoalexin mainly found in plants, including grapes, peanuts, root extracts of the weed *Polygonum cuspidatum*, and various fruits (20). Resveratrol has been shown to have multiple bioactivities, including anti-oxidative, chemopreventive, anti-tumor, growth inhibitory, anti-inflammatory, estrogen-like, and immunoregulatory activity (21,22). Resveratrol can affect various cellular events related to distinct steps of carcinogenesis, i.e., tumor initiation, promotion and progression (23,24). Resveratrol has therapeutic potential due to its ability to suppress tumor cell growth via inducing cell-cycle arrest and apoptosis, and to suppress tumor angiogenesis via inhibiting the vascular endothelial growth factor (VEGF) protein (25-34). At the molecular level, these effects may be attributed to the inhibition of the formation of free radicals, and the inhibition of cyclooxygenase, cytochrome P450 and protein kinase C

Correspondence to: Professor Yongming Sun, Department of Orthopaedics, The Second Affiliated Hospital of Soochow University, 1055 Sanxiang Road, Suzhou, Jiangsu 215004, P.R. China
E-mail: sun-ym@21cn.com

Key words: resveratrol, hypoxia inducible factor-1 α , invasion, epithelial to mesenchymal transition, osteosarcoma

activities (35). Despite these findings however, the molecular mechanisms underlying the anticancer effects of resveratrol remain largely unknown (6,25). Previous studies have shown for the first time that resveratrol exerts a strong inhibitory effect on HIF-1 α and VEGF expression in human ovarian cancer cells. These studies demonstrated that resveratrol interferes with the protein translational machinery and promotes HIF-1 α protein degradation, rather than affecting the *HIF-1 α* mRNA level (6,22).

In this study, we focused on the regulation, by resveratrol, of cell proliferation, cell invasion and of the EMT process in the human osteosarcoma cell line Saos-2 under hypoxic conditions. We demonstrate that resveratrol markedly reduces the enhanced cell proliferation and migration in hypoxic conditions through downregulation of the HIF-1 α protein, and that it also inhibits the epithelial-mesenchymal transition.

Materials and methods

Materials. The human osteosarcoma cell line Saos-2 was purchased from the Shanghai Institutes for Biological Sciences (Chinese Academy of Sciences, Shanghai, China); McCoy's 5A, fetal bovine serum (FBS), trypsin, methabenzthiazuron (MTT), and dimethyl sulfoxide (DMSO) were purchased from Sigma-Aldrich (St. Louis, MO, USA); resveratrol was obtained from MP Biomedicals, Inc. (Aurora, OH, USA). Antibodies were purchased from the following sources: anti-human anti-HIF-1 α , -E-cadherin and -vimentin from Cell Signaling Technology (Boston, MA, USA); anti-human anti- β -actin, goat-anti-mouse and anti-rabbit IgG, and rabbit anti-goat IgG from Santa Cruz Biotechnology, Inc. (Santa Cruz, CA, USA). HIF-1 α small interfering (si)RNA and siRNA controls were obtained from Santa Cruz Biotechnology, Inc.; Transwell chambers from EMD Millipore (Billerica, MA, USA); Invitrogen® Lipofectamine 2000 from Thermo Fisher Scientific (Waltham, MA, USA); PCR mix from Xi'an Runde Biotechnology (Xi'an, China); and PCR primer sets from Dingguo Biotechnology Co., Ltd. (Beijing, China).

Cell cultures and transfection. The human osteosarcoma Saos-2 cell line was cultured in McCoy's 5A medium supplemented with 15% FBS, 100 μ g/ml ampicillin and 100 μ g/ml streptomycin, at 37°C in a humidified atmosphere containing 5% CO₂. In experiments designed to evaluate the role of hypoxia, cells were first incubated in normoxic conditions to acquire the desired subconfluence level (65-70%), and then cultured in controlled hypoxic conditions (3% O₂), as previously described (36,37) for up to 24 h. Osteosarcoma cells at the exponential phase were incubated in six orifice plates in McCoy's 5A supplemented with 1% FBS for 24 h. The drugs (or solvent only) were then added to the medium containing 1% FBS, and cells were cultured for an additional 24 h prior to the Matrigel invasion assay.

Cell proliferation assay. Each group of cells was seeded onto a 96-well plate at a density of 5,000-10,000 cells/well for 24 h prior to serum starvation for 24 h. Following starvation, cells were incubated in McCoy's 5A medium supplemented with 15% FBS. After 12, 24, 48 or 72 h, the medium was removed, and the MTT reagent (5 mg/ml) was added in each well for a

4-h incubation at 37°C. Optical densities (OD) were measured at 490 nm on a microplate reader (BioTek Instruments, Inc., Winooski, VA, USA). The proliferation rate was calculated as OD (sample)/OD (control). Reported values are the average of triplicate experiments.

Matrigel cell invasion assay. The invasive ability of each group of cells was evaluated through a Transwell chamber-based invasion assay. Briefly, the upper surface of the Transwell filter was coated with Matrigel (BD Biosciences, Franklin Lakes, NJ, USA). Before treatment, cells at the exponential phase were incubated in McCoy's 5A medium supplemented with 1% FBS for 24 h in 6-well plates. The cells (5 \times 10⁴) were resuspended in serum-free medium and allowed to migrate towards a serum gradient (20%) in the lower chamber for 24 h, in a humidified tissue culture incubator. Non-invasive cells were removed from the top of the Matrigel by scraping with a cotton-tipped swab. Invasive cells at the bottom surface of the filter were fixed with 4% paraformaldehyde and stained with Crystal Violet dye (Boster Biological Technology, Ltd., Wuhan, China). The number of invasive cells was counted under a light microscope (Axio Observer A1; Carl Zeiss Microscopy GmbH, Jena Germany) at 10 random fields for each membrane, and pictures were acquired at x100 magnification with a Axiocam MRc5 camera (Carl Zeiss Microscopy GmbH). The tumor cell invasion assay was performed in triplicate.

Western blot assay. Saos-2 cells were washed with ice-cold phosphate-buffered saline and lysed *in situ* with RIPA buffer (50 mM Tris, pH 7.5, 150 mM NaCl, 0.5% sodium deoxycholate, 1.0% Triton X-100, 0.1% SDS), supplemented with protease inhibitors (Roche Diagnostics, Penzberg, Germany) and phosphatase inhibitors (Sigma-Aldrich). Following incubation on ice for 30 min, cell lysates were centrifuged at 12,000 \times g for 15 min at 4°C to remove the debris. Proteins (100 μ g) were separated by 10% SDS-PAGE and were transferred to polyvinylidene difluoride (PVDF) membranes (Roche Diagnostics). Then, the PVDF membranes were blocked with 5% non-fat dry milk in TBST (10 mM Tris-HCl, pH 8.0, 150 mM NaCl, 0.05% Tween-20) and incubated with the primary antibodies overnight at 4°C. After washing with TBST five times for 10 min each, the PVDF membranes were incubated with horseradish peroxidase-conjugated secondary antibodies at room temperature for 2 h. The membranes were washed again with TBST and an enhanced chemiluminescence (ECL) kit (USCN Life Science Inc., Wuhan, China) was used to visualize the immunoblots.

Reverse transcription-polymerase chain reaction (RT-PCR). Total RNAs were extracted from osteosarcoma cells with the Invitrogen® TRIzol reagent (Thermo Fisher Scientific) according to the manufacturer's protocol, and the RT reaction was performed using a PrimeScript RT Reagent kit (Takara, Dalian, China). cDNAs (1 μ l for each sample) were amplified by PCR using the following primer sequences: HIF-1 α forward (F), 5'-AAGTCTAGGGATGCAGCA-3', and reverse (R), 5'-CAAGATCACCAGCATCATG-3'; E-cadherin F, 5'-ATTCTGATTCTGCTGCTCTTG-3', and R, 5'-AGTCCTGGTCCTCTTCTCC-3'; vimentin F, 5'-AATGACCGCTTCGCCAAC-3', and R, 5'-CCGCATCTCCTCCTCGTAG-3';

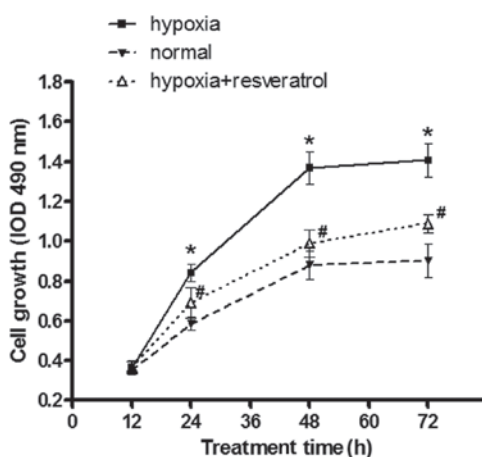


Figure 1. Effect of resveratrol on the hypoxia-enhanced proliferation rate of Saos-2 cells. Saos-2 cells were incubated under normoxic or hypoxic conditions for 24 h, then 50 μ M resveratrol as in (22,25) were added to the medium, and cells were cultured for an additional 24 h. Normal, hypoxia and hypoxia + resveratrol group cells were seeded in 96-well tissue culture plates at indicated time-points (12, 24, 48 or 72 h), and the MTT assay was performed to determine the proliferation rate of the cells in each group. Results compiled from three independent experiments are shown. * $P < 0.05$ as compared to the normal control (normoxia) group; # $P < 0.05$ as compared to the hypoxia group; IOD, integrated optical density.

β -actin F, 5'-ATTCTGATTCTGCTGCTCTTG-3', and R, 5'-AGTCTGGTCTCTTCTCC-3'. β -actin was used as the normalization control. The amplified products were observed by 1.5% agarose gel electrophoresis. Images of the gel were acquired and analyzed under a UV transilluminator. The RT-PCR assay was carried out in triplicate.

RNA interference. siRNAs targeting the *HIF-1 α* gene (HIF-1 α -Homo-2258: 5'-CCACCACUGAUGAAUUAATT-3' and 5'-UUUAAUUCAGUGGUGGTT-3') and negative control siRNAs (NC: 5'-UUCUCCGAACGUGUCACGUTT-3' and 5'-ACGUGACACGUUCGGAGAATT-3') were purchased from Santa Cruz Biotechnology, Inc. Cells (10^5 /well) seeded in 6-well plates were transfected with 100 nM siRNA using the Lipofectamine 2000 reagent according to the manufacturer's instructions. The cells were used for further experiments at 48 h after transfection.

Statistical analysis. Data were expressed as the mean \pm standard deviation. Differences were evaluated using unpaired two-tailed Student's t-tests with unequal variance for multiple comparisons using the SPSS version 18.0 software (SPSS Inc., Chicago, IL, USA). P-values < 0.05 were considered to indicate statistically significant differences. All experiments were independently repeated at least three times.

Results

Resveratrol attenuates the effect of hypoxia on increased proliferation of Saos-2 cells. To investigate the potential role of resveratrol on osteosarcoma Saos-2 cell proliferation under hypoxic conditions, normal (grown under normoxia) cells, hypoxic cells and hypoxic cells pre-treated with resveratrol were seeded onto 96-well plates at different time-points, and the proliferative rate of in each group was investigated by the

MTT assay. Hypoxia markedly increased the proliferation rate of Saos-2 cells as compared to the normal cell group, and resveratrol significantly reduced the proliferation rate of the hypoxic cell group at different time-points (Fig. 1).

Resveratrol reverses the increased invasive ability of Saos-2 cells under hypoxia. We further tested the effect of resveratrol on the Saos-2 cell invasive ability under an hypoxic micro-environment. The results showed that hypoxia significantly increases the number of invasive Saos-2 cells as compared to normoxia, and resveratrol markedly reduced the invasive ability of hypoxic cells (Fig. 2).

Resveratrol inhibits the EMT process induced by hypoxia in Saos-2 cells. To investigate whether Saos-2 cells undergo EMT as a result of exposure to hypoxia, we examined the expression of markers of epithelial and mesenchymal phenotypes by western blot analysis. Hypoxic cells displayed decreased E-cadherin and increased vimentin expression (Fig. 3). However, when hypoxic cells were pre-treated with resveratrol, the hypoxia-induced EMT process was reversed. Resveratrol treatment caused a marked increase in the expression of E-cadherin, and a significant decrease in the expression of vimentin (Fig. 3).

Resveratrol attenuates the effects of hypoxia likely through downregulation of HIF-1 α in Saos-2 cells. We further investigated whether resveratrol inhibits HIF-1 α expression, which was induced in tumor cells upon exposure to hypoxic stress, a common condition in aggressive solid tumors. We observed that pretreatment of Saos-2 cells with resveratrol reduced the hypoxia-induced HIF-1 α protein accumulation without affecting the *HIF-1 α* mRNA level (Fig. 4). Quantitative data from the three repeated experiments, using β -actin as the normalized control, showed the relative HIF-1 α mRNA expression level (\pm standard deviation) in each group was 0.136 ± 0.042 , 0.758 ± 0.084 and 0.728 ± 0.080 for the normal, hypoxia and hypoxia + resveratrol groups, respectively. Furthermore, quantitative data from the three repeated experiments revealed the relative HIF-1 α protein expression levels (\pm standard deviation), using β -actin as the normalization control, were 0.323 ± 0.050 , 0.842 ± 0.096 and 0.419 ± 0.046 for the normal, hypoxia and hypoxia + resveratrol groups, respectively. These results indicate that the HIF-1 α protein level was significantly decreased in the hypoxia + resveratrol group, when compared with the hypoxia group ($P < 0.05$), however, no significant difference in HIF-1 α mRNA expression was identified ($P > 0.05$).

Next, we investigated whether resveratrol attenuates the effects of hypoxia through downregulation of the *HIF-1 α* gene in Saos-2 cells. We transiently silenced *HIF-1 α* and analyzed its expression and cell growth under hypoxic conditions (Fig. 5A and B). In the si-control transfected group of cells exposed to hypoxic conditions, treatment with resveratrol significantly reduced the proliferation rate (Fig. 5C), increased the level of *E-cadherin* and decreased that of *vimentin* (Fig. 6A). Furthermore, resveratrol significantly decreased the invasive ability of Saos-2 cells, which was induced by hypoxia (Fig. 6B). In the si-HIF-1 α -transfected group, however, resveratrol had no significant effect under hypoxic conditions (Figs. 5C and 6).

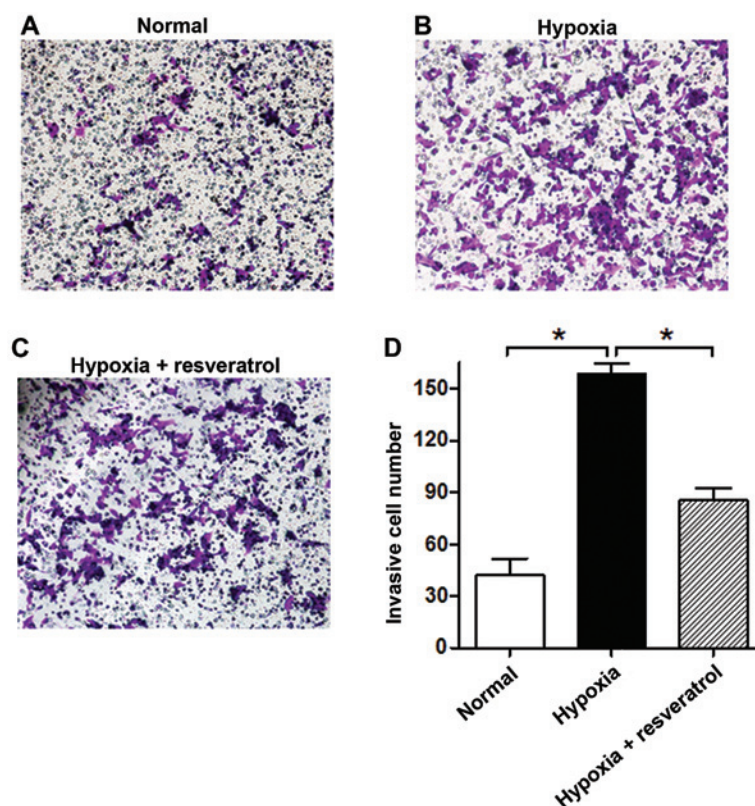


Figure 2. Effect of resveratrol on the invasive ability of Saos-2 cells under hypoxia. Saos-2 cells were incubated under normoxic or hypoxic conditions for 24 h, then 50 μ M resveratrol was added to the medium, and cells were cultured for an additional 24 h prior to the Matrigel invasion assay. (A) Normal (normoxia) group, (B) hypoxia group, (C) hypoxia + resveratrol group, and (D) the number of invasive cells in each group, data compiled from three independent experiments. * P <0.05. Bars, mean \pm standard deviation.

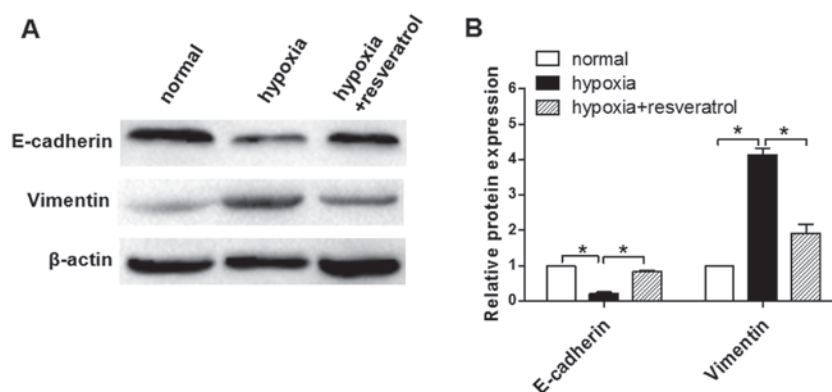


Figure 3. Effect of resveratrol on the epithelial to mesenchymal transition (EMT) process induced by hypoxia in Saos-2 cells. (A) The expression of EMT-related proteins (E-cadherin and vimentin) was evaluated by western blot analysis (representative blot from three independent experiments) following treatment of cells with 50 μ M resveratrol. (B) The integrated optical density was measured to assess the relative protein expression of EMT-related proteins, with β -actin used as the normalization control. Data compiled from three independent experiments are shown. * P <0.05. Bars, mean \pm standard deviation.

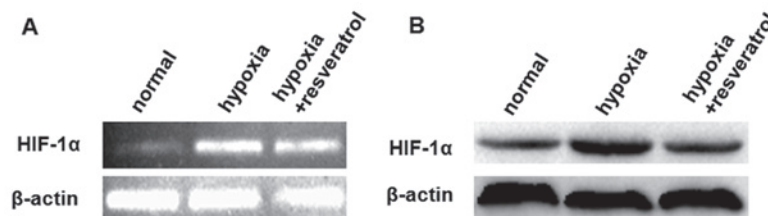


Figure 4. Effect of resveratrol on the hypoxia-induced accumulation of hypoxia inducible factor-1 α (HIF-1 α) in Saos-2 cells. (A) After treatment with 50 μ M resveratrol for 24 h, the mRNA level of *HIF-1 α* was estimated by reverse transcription-polymerase chain reaction. (B) The expression of the HIF-1 α protein was evaluated by western blot analysis.

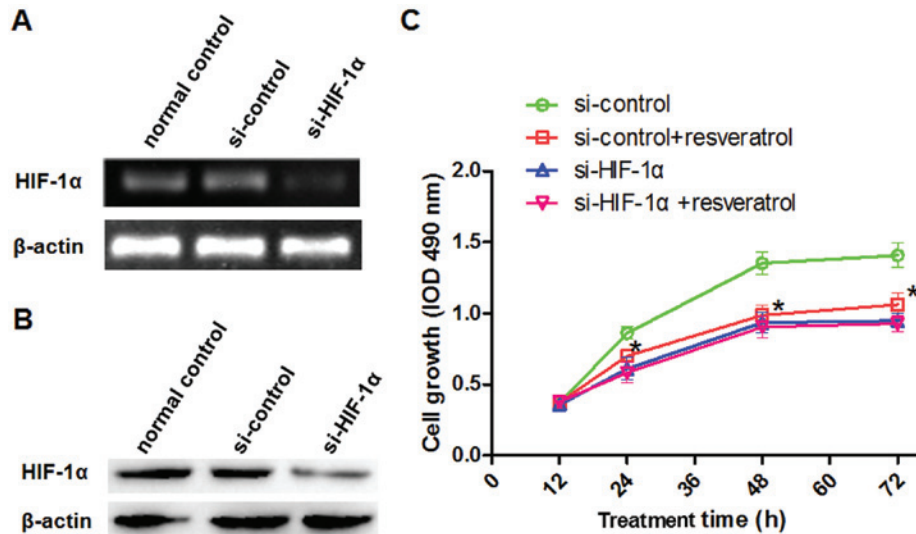


Figure 5. Effect of small interfering (si)RNA targeting the hypoxia inducible factor-1α gene (*HIF-1α*) on proliferation of Saos-2 cells under hypoxic conditions, 48 h after transfection. Detection, in siRNA-transfected Saos-2 cells (si-HIF-1α) of the *HIF-1α* (A) mRNA by reverse transcription-polymerase chain reaction and (B) protein by western blot analysis. (C) The effect of *HIF-1α* silencing on cell proliferation, assessed by the methabenzthiazuron (MTT) assay. * $P < 0.05$ compared with the normal group.

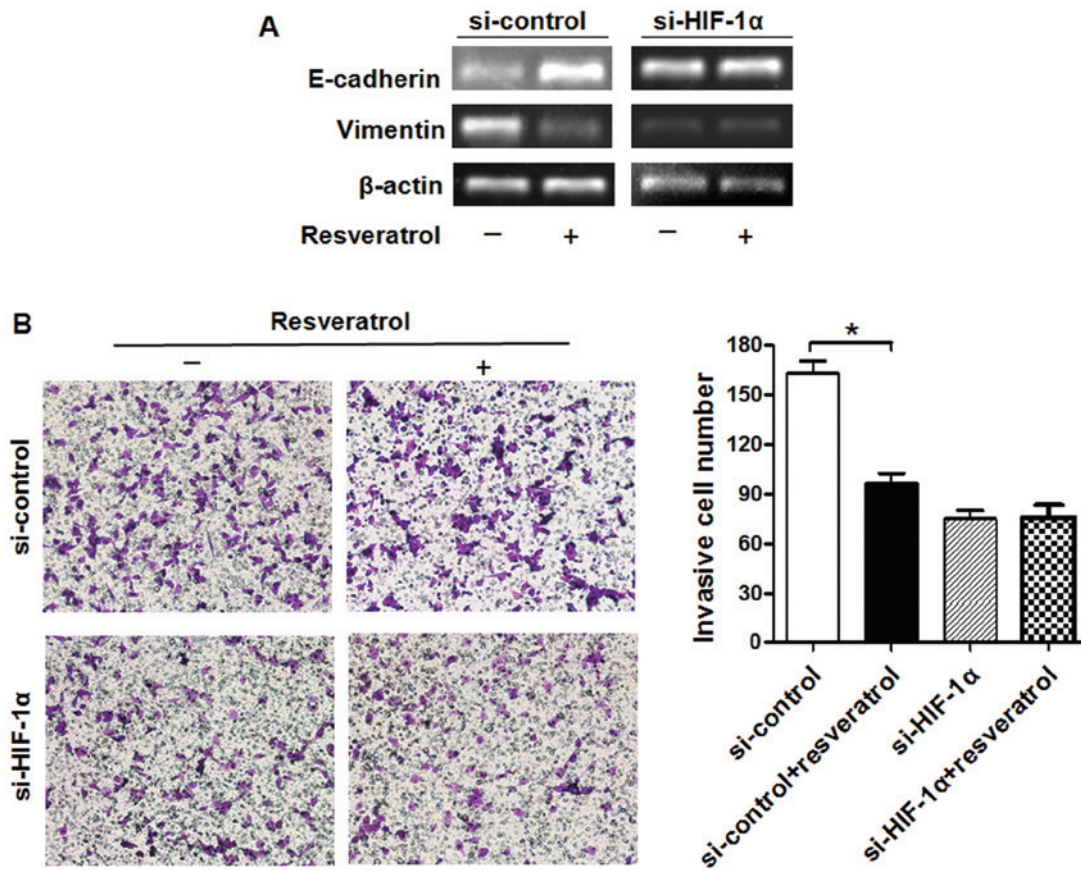


Figure 6. Effect of hypoxia inducible factor-1α (*HIF-1α*) silencing on hypoxia-induced invasiveness and protein expression in Saos-2 cells. Following transfection with siRNA for 48 h, Saos-2 cells were cultured with or without 50 μ M of resveratrol under hypoxic conditions. (A) The effects of *HIF-1α* silencing on the epithelial to mesenchymal transition (EMT) process of Saos-2 cells. The expression of the EMT-related genes *E-cadherin* and *vimentin* was evaluated by reverse transcription-polymerase chain reaction. (B) The effects of *HIF-1α* silencing on the invasive ability of Saos-2 cells, estimated by the Matrigel invasion assay. The number of cells was counted under a light microscope. * $P < 0.05$. Bars, mean \pm standard deviation (n=10).

These findings suggest that HIF-1α expression plays a vital role in the resveratrol-abrogated effects of hypoxia in Saos-2 cells.

Discussion

Invasive solid tumors often present a characteristic hypoxic

microenvironment, which leads to an abnormality in the microvasculature and a rapid expansion of the tumor mass. Previous studies have demonstrated that the effects induced by hypoxia is mainly mediated by HIF-1 α (9). HIF-1 α overexpression was observed in numerous solid tumors including glioma, pancreatic cancer and prostate carcinoma cells, as well as human tongue squamous cell carcinomas (9,38-41). Previous studies have shown that HIF-1 α overexpression, either as a result of intratumoral hypoxia or genetic alterations, increases the transcription of downstream genes, which contributes to cancer cell invasion (41-43). These findings indicate that there is an association between hypoxia or HIF-1 α overexpression and tumor invasion or patient mortality (43). In the present study, we showed that resveratrol markedly inhibits the promoting effect of hypoxia on the invasive ability of Saos-2 cells.

The epithelial to mesenchymal transition (EMT) is considered a dynamic and reversible biological process. It has now become apparent that EMT plays important roles in the progression of cancer (44). Hypoxia is associated with the EMT process, and HIF-1 α was shown to mediate the hypoxia-induced changes in the EMT (42). Recently, resveratrol was reported to have antitumor activities, including the ability to inhibit the EMT process in tumors. A number of studies have shown that resveratrol can suppress the EMT process through reactivating p53 and by inducing miR-145 and miR-200c, suppressing the PI3K/Akt/nuclear factor- κ B (NF- κ B) pathway, downregulating the PI3K/Akt and Wnt/ β -catenin signaling cascades, or inhibiting transforming growth factor- β 1 (TGF- β 1) *in vitro*. In addition, resveratrol treatment reduced the levels of EMT markers in xenograft tumors *in vivo* (45-50). In our experiments, resveratrol reversed the hypoxia-enhanced EMT process by affecting the expression of related proteins.

Several *in vitro* studies have demonstrated that resveratrol can inhibit the proliferation of a number of tumor types, such as leukemia, prostate, breast and colon cancers, as well as osteosarcoma, under normoxic conditions (23,51-53). The results from the present study provide evidence that resveratrol also has an inhibitory effect on hypoxia-enhanced proliferation of osteosarcoma (Saos-2) cells.

Resveratrol exerts a strong inhibitory effect on HIF-1 α expression in certain human cancer cells (8,22). These studies showed that resveratrol interferes with the protein translational machinery and promotes HIF-1 α protein degradation rather than affecting the HIF-1 α mRNA levels. In the present study, we showed that resveratrol markedly inhibits HIF-1 α protein expression without affecting the HIF-1 α mRNA level. Silencing of HIF-1 α reversed all the above-mentioned effects of hypoxia, which indicates that the effect of resveratrol on hypoxia may be attributed to its inhibitory effects on HIF-1 α protein expression. However, additional studies are needed to identify the associated genes that are directly or indirectly involved in resveratrol-regulated cancer cell invasion in response to hypoxia and/or HIF-1 α overexpression.

Acknowledgements

We thank all laboratory technicians in the Translational Medicine Research Center of Suzhou University School for their guidance in molecular biology techniques.

References

1. Stiller CA: International patterns of cancer incidence in adolescents. *Cancer Treat Rev* 33: 631-645, 2007.
2. Link MP, Goorin AM, Miser AW, *et al*: The effect of adjuvant chemotherapy on relapse-free survival in patients with osteosarcoma of the extremity. *N Engl J Med* 314: 1600-1606, 1986.
3. Harting MT, Blakely ML, Jaffe N, *et al*: Long-term survival after aggressive resection of pulmonary metastases among children and adolescents with osteosarcoma. *J Pediatr Surg* 41: 194-199, 2006.
4. Meyers PA, Heller G, Healey JH, *et al*: Osteogenic sarcoma with clinically detectable metastasis at initial presentation. *J Clin Oncol* 11: 449-453, 1993.
5. Geller DS and Gorlick R: Osteosarcoma: a review of diagnosis, management, and treatment strategies. *Clin Adv Hematol Oncol* 8: 705-718, 2010.
6. Michieli P: Hypoxia, angiogenesis and cancer therapy: to breathe or not to breathe? *Cell Cycle* 8: 3291-3296, 2009.
7. Pennacchietti S, Michieli P, Galluzzo M, Mazzone M, Giordano S and Comoglio PM: Hypoxia promotes invasive growth by transcriptional activation of the met protooncogene. *Cancer Cell* 3: 347-361, 2003.
8. Esteban MA, Tran MG, Harten SK, *et al*: Regulation of E-cadherin expression by VHL and hypoxia-inducible factor. *Cancer Res* 66: 3567-3575, 2006.
9. Semenza GL: Targeting HIF-1 for cancer therapy. *Nat Rev Cancer* 3: 721-732, 2003.
10. Cheng ZX, Sun B, Wang SJ, *et al*: Nuclear factor- κ B-dependent epithelial to mesenchymal transition induced by HIF-1 α activation in pancreatic cancer cells under hypoxic conditions. *PLoS One* 6: e23752, 2011.
11. Semenza GL: HIF-1 and tumor progression: pathophysiology and therapeutics. *Trends Mol Med* 8: S62-S67, 2002.
12. Imai T, Horiuchi A, Wang C, *et al*: Hypoxia attenuates the expression of E-cadherin via up-regulation of SNAIL in ovarian carcinoma cells. *Am J Pathol* 163: 1437-1447, 2003.
13. Yang MH and Wu KJ: TWIST activation by hypoxia inducible factor-1 (HIF-1): implications in metastasis and development. *Cell Cycle* 7: 2090-2096, 2008.
14. Harris AL: Hypoxia - a key regulatory factor in tumour growth. *Nat Rev Cancer* 2: 38-47, 2002.
15. Gupta GP and Massague J: Cancer metastasis: building a framework. *Cell* 127: 679-695, 2006.
16. Birner P, Schindl M, Obermair A, Plank C, Breitenacker G and Oberhuber G: Overexpression of hypoxia-inducible factor 1 α is a marker for an unfavorable prognosis in early-stage invasive cervical cancer. *Cancer Res* 60: 4693-4696, 2000.
17. Birner P, Schindl M, Obermair A, Breitenacker G and Oberhuber G: Expression of hypoxia-inducible factor 1 α in epithelial ovarian tumors: its impact on prognosis and on response to chemotherapy. *Clin Cancer Res* 7: 1661-1668, 2001.
18. Aebersold DM, Burri P, Beer KT, *et al*: Expression of hypoxia-inducible factor-1 α : a novel predictive and prognostic parameter in the radiotherapy of oropharyngeal cancer. *Cancer Res* 61: 2911-2916, 2001.
19. Koukourakis MI, Giatromanolaki A, Skarlatos J, *et al*: Hypoxia inducible factor (HIF-1 α and HIF-2 α) expression in early esophageal cancer and response to photodynamic therapy and radiotherapy. *Cancer Res* 61: 1830-1832, 2001.
20. Soleas GJ, Diamandis EP and Goldberg DM: Wine as a biological fluid: history, production, and role in disease prevention. *J Clin Lab Anal* 11: 287-313, 1997.
21. Aggarwal BB, Bhardwaj A, Aggarwal RS, Seeram NP, Shishodia S and Takada Y: Role of resveratrol in prevention and therapy of cancer: preclinical and clinical studies. *Anticancer Res* 24: 2783-2840, 2004.
22. Zhang Q, Tang X, Lu QY, Zhang ZF, Brown J and Le AD: Resveratrol inhibits hypoxia-induced accumulation of hypoxia-inducible factor-1 α and VEGF expression in human tongue squamous cell carcinoma and hepatoma cells. *Mol Cancer Ther* 4: 1465-1474, 2005.
23. Jang M, Cai L, Udeani GO, *et al*: Cancer chemopreventive activity of resveratrol, a natural product derived from grapes. *Science* 275: 218-220, 1997.
24. Kundu JK, Chun KS, Kim SO and Surh YJ: Resveratrol inhibits phorbol ester-induced cyclooxygenase-2 expression in mouse skin: MAPKs and AP-1 as potential molecular targets. *Biofactors* 21: 33-39, 2004.

25. Cao Z, Fang J, Xia C, Shi X and Jiang BH: trans-3,4,5'-Trihydroxystilbene inhibits hypoxia-inducible factor 1 α and vascular endothelial growth factor expression in human ovarian cancer cells. *Clin Cancer Res* 10: 5253-5263, 2004.
26. Aziz MH, Kumar R and Ahmad N: Cancer chemoprevention by resveratrol: *In vitro* and *in vivo* studies and the underlying mechanisms (review). *Int J Oncol* 23: 17-28, 2003.
27. Jiang H, Zhang L, Kuo J, *et al*: Resveratrol-induced apoptotic death in human U251 glioma cells. *Mol Cancer Ther* 4: 554-561, 2005.
28. Wang TT, Schoene NW, Kim EK and Kim YS: Pleiotropic effects of the sirtuin inhibitor sirtinol involves concentration-dependent modulation of multiple nuclear receptor-mediated pathways in androgen-responsive prostate cancer cell LNCaP. *Mol Carcinog* 52: 676-685, 2013.
29. Juan ME, Alfaro I and Planas JM: Colorectal cancer chemoprevention by trans-resveratrol. *Pharmacol Res* 65: 584-591, 2012.
30. Liu P, Wang X, Hu C and Hu T: Inhibition of proliferation and induction of apoptosis by trimethoxyl stilbene (TMS) in a lung cancer cell line. *Asian Pac J Cancer Prev* 12: 2263-2269, 2011.
31. Zhou JH, Cheng HY, Yu ZQ, He DW, Pan Z and Yang DT: Resveratrol induces apoptosis in pancreatic cancer cells. *Chin Med J (Engl)* 124: 1695-1699, 2011.
32. Yu HB, Zhang HF, Zhang X, *et al*: Resveratrol inhibits VEGF expression of human hepatocellular carcinoma cells through a NF- κ B-mediated mechanism. *Hepatogastroenterology* 57: 1241-1246, 2010.
33. Li Y, Bäckesjö CM, Haldosén LA and Lindgren U: Resveratrol inhibits proliferation and promotes apoptosis of osteosarcoma cells. *Eur J Pharmacol* 609: 13-18, 2009.
34. Liu Z, Li Y and Yang R: Effects of resveratrol on vascular endothelial growth factor expression in osteosarcoma cells and cell proliferation. *Oncol Lett* 4: 837-839, 2012.
35. Gusman J, Malonne H and Atassi G: A reappraisal of the potential chemopreventive and chemotherapeutic properties of resveratrol. *Carcinogenesis* 22: 1111-1117, 2001.
36. Aleffi S, Petrai I, Bertolani C, *et al*: Upregulation of proinflammatory and proangiogenic cytokines by leptin in human hepatic stellate cells. *Hepatology* 42: 1339-1348, 2005.
37. Novo E, Cannito S, Zamara E, *et al*: Proangiogenic cytokines as hypoxia-dependent factors stimulating migration of human hepatic stellate cells. *Am J Pathol* 170: 1942-1953, 2007.
38. Zagzag D, Zhong H, Scalzitti JM, Laughner E, Simons JW and Semenza GL: Expression of hypoxia-inducible factor 1 α in brain tumors: association with angiogenesis, invasion, and progression. *Cancer* 88: 2606-2618, 2000.
39. Zhong H, Chiles K, Feldser D, *et al*: Modulation of hypoxia-inducible factor 1 α expression by the epidermal growth factor/phosphatidylinositol 3-kinase/PTEN/AKT/FRAP pathway in human prostate cancer cells: implications for tumor angiogenesis and therapeutics. *Cancer Res* 60: 1541-1545, 2000.
40. Zhang Q, Zhang ZF, Rao JY, *et al*: Treatment with siRNA and antisense oligonucleotides targeted to HIF-1 α induced apoptosis in human tongue squamous cell carcinomas. *Int J Cancer* 111: 849-857, 2004.
41. Akakura N, Kobayashi M, Horiuchi I, *et al*: Constitutive expression of hypoxia-inducible factor-1 α renders pancreatic cancer cells resistant to apoptosis induced by hypoxia and nutrient deprivation. *Cancer Res* 61: 6548-6554, 2001.
42. Lei J, Ma J, Ma Q, *et al*: Hedgehog signaling regulates hypoxia induced epithelial to mesenchymal transition and invasion in pancreatic cancer cells via a ligand-independent manner. *Mol Cancer* 12: 66, 2013.
43. Krishnamachary B, Berg-Dixon S, Kelly B, *et al*: Regulation of colon carcinoma cell invasion by hypoxia-inducible factor 1. *Cancer Res* 63: 1138-1143, 2003.
44. Huber MA, Kraut N and Beug H: Molecular requirements for epithelial-mesenchymal transition during tumor progression. *Curr Opin Cell Biol* 17: 548-558, 2005.
45. Shi XP, Miao S, Wu Y, *et al*: Resveratrol sensitizes tamoxifen in antiestrogen-resistant breast cancer cells with epithelial-mesenchymal transition features. *Int J Mol Sci* 14: 15655-15668, 2013.
46. Shen YA, Lin CH, Chi WH, *et al*: Resveratrol impedes the stemness, epithelial-mesenchymal transition, and metabolic reprogramming of cancer stem cells in nasopharyngeal carcinoma through p53 activation. *Evid Based Complement Alternat Med* 2013: 590393, 2013.
47. Li W, Ma J, Ma Q, *et al*: Resveratrol inhibits the epithelial-mesenchymal transition of pancreatic cancer cells via suppression of the PI-3K/Akt/NF- κ B pathway. *Curr Med Chem* 20: 4185-4194, 2013.
48. Tsai JH, Hsu LS, Lin CL, *et al*: 3,5,4'-Trimethoxystilbene, a natural methoxylated analog of resveratrol, inhibits breast cancer cell invasiveness by downregulation of PI3K/Akt and Wnt/ β -catenin signaling cascades and reversal of epithelial-mesenchymal transition. *Toxicol Appl Pharmacol* 272: 746-756, 2013.
49. Wang H, Zhang H, Tang L, *et al*: Resveratrol inhibits TGF- β 1-induced epithelial-to-mesenchymal transition and suppresses lung cancer invasion and metastasis. *Toxicology* 303: 139-146, 2013.
50. Hu FW, Tsai LL, Yu CH, Chen PN, Chou MY and Yu CC: Impairment of tumor-initiating stem-like property and reversal of epithelial-mesenchymal transdifferentiation in head and neck cancer by resveratrol treatment. *Mol Nutr Food Res* 56: 1247-1258, 2012.
51. Mitchell SH, Zhu W and Young CY: Resveratrol inhibits the expression and function of the androgen receptor in LNCaP prostate cancer cells. *Cancer Res* 59: 5892-5895, 1999.
52. Schneider Y, Vincent F, Duranton B, *et al*: Anti-proliferative effect of resveratrol, a natural component of grapes and wine, on human colonic cancer cells. *Cancer Lett* 158: 85-91, 2000.
53. Estrov Z, Shishodia S, Faderl S, *et al*: Resveratrol blocks interleukin-1 β -induced activation of the nuclear transcription factor NF- κ B, inhibits proliferation, causes S-phase arrest, and induces apoptosis of acute myeloid leukemia cells. *Blood* 102: 987-995, 2003.